

Low Carbon Europe



Company Overview & Research Activities

Presented by:

Darren Jones BSc (Hons) C.Eng FCIBSE LCC LCEA

Ria Larkins BSc (Hons) LCEA



Introduction

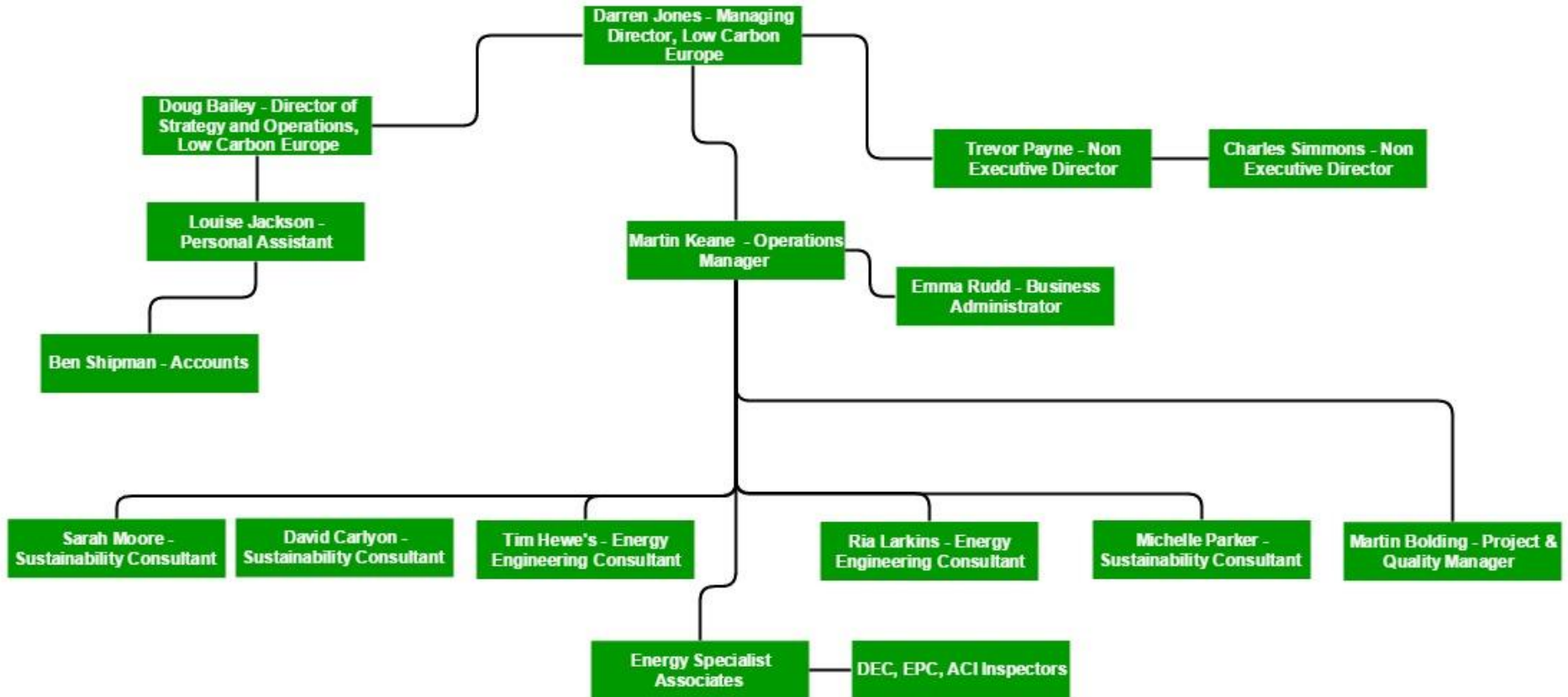
- About Us
- Our Team
- Our Clients and Current Projects
- Our Services
- Sustainability Benchmark - Mindset 2050
- PhD Research

About Us

- Trading since 2010
- Chartered Engineering Consultancy holding ISO9001 and ISO14001 Accreditations
- Our staff are a blend of Engineering and Environmental Consultants
- CIBSE Low Carbon Energy Assessors and Low Carbon Consultants
- Current supplier to many public and private sector clients for energy and environmental related services
- CIBSE Trainers for Low Carbon Energy Assessors
- Specialists in the Healthcare Sector



Low Carbon Europe – Organisational Chart



OUR CLIENTS

Central and North West London 
NHS Foundation Trust



Initial[®]



SKANSKA



The Leeds Teaching Hospitals 
NHS Trust



Brighton and Sussex 
University Hospitals
NHS Trust



Recent & On-going Projects



Client	Description of Works
Ipswich University Hospital	Retained Energy Management Service (REMS)
Dartford and Gravesham University Hospital	Mindset 2050 sustainable and environmental support, Assistance with SDMP and behaviour change programmes Assisting introduction of CSH Green ward competition
Barts Healthcare NHS Trust	Theatre Optimisation Report and Recommendations
Northwick Park Hospital	BMS Implementation
Central North West London	Retained Energy Management Service (REMS) Development of SDMP DECs for 35 sites
North Midlands University Hospitals	Retained Energy Management Service (REMS) BMS Review CHP QA Feasibility Study
Network Rail	ACIs for St Pancras, Ebbsfleet International, Stratford International and Singlewell Depot
Western Sussex Hospitals	Retained Energy Management Service (REMS)
Nottingham University Hospitals	Retained Energy Management Service (REMS)
Southend Hospital	45 AHUs Condition Survey, Energy Report and Recommendations
Hampshire Hospitals	Energy Audit of Royal Hampshire Hospital, Winchester
Adur and Worthing Borough Council	Provision of EPCs
A & P Falmouth Dockyard	ESOS Audit
Homerton University Hospital	CRC Rescue Package

Our Services

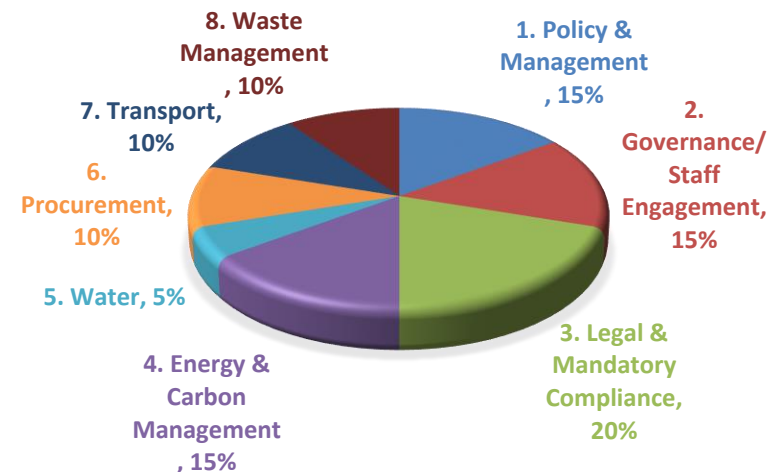
- Retained Energy Management Service (REMS)
- Mindset 2050 (Taking action now to secure the future)
- Building Compliance Services (BECS)
- BMS Control Strategy Reviews and System Upgrades
- Investment Grade Energy Conservation Audits
- Ventilation Optimisation
- Project Design, Management and Verification
- CHP & Renewable Technologies
- Sustainable Development Management Plans
- Travel Plans
- Behavioural Change Programmes
- Statutory Air Conditioning Inspections
- Statutory DEC & ARs
- CRC, EUETS Advice and ESOS Compliance

Our Key Services – REMS/Mindset 2050

- Key account manager, supported by a team of specialist consultants
- Providing the client with on and off site support, two or three days per week
- Work streams vary according to the specific needs of our clients, work priorities are constantly changing...

Mindset 2050 Sustainability Benchmark

- Development of a sustainability benchmark table similar to the University Green League and Local Authority Index.
- LCE have designed an environmental and sustainability questionnaire with 8 weighted categories.
- To avoid reasonable ambiguity all questions have been structured to be either yes, no or an actual figure.
- Information used to answer the questionnaire has been sourced from ERIC (Estates Return Information Collection), supported by information received through a Freedom of information request and personal letter to the Trusts CEO.



Mindset 2050 Sustainability Benchmark

- 60 Trusts across London and South have responded, upon which LCE have developed a first cohort benchmark table.
- Instead of reporting the results in numeric positions LCE intend to use the familiar A-G energy performance scale.
- It is hoped that this table will encourage competition amongst Trusts and more importantly, encourage Trusts to become more proactive with regard to their sustainability agenda.
- LCE are hoping to publically present a nationwide NHS Sustainability benchmark table later in the year, once all the results have been analysed and verified.



PhD Research - A summary of the issues.....

- The number and variety of different autonomous organisations that make up the NHS defines it 'a complex system'
- Multiple stakeholders (each with different needs and focus)
- Trust board members do not currently prioritise the NHS carbon reduction agenda (secondary to the Trusts core business)
- Shortfall in engineering knowledge, internal and external – Cognitive Bias
- Lack of capital finance within NHS Trusts
- Reliance on 'rules of thumbs' measurements and evaluations when developing carbon reduction business case proposals (lack of data) - Bounded Rationalities
- Current reporting metrics lead to the disengagement of key stakeholders
- Changes in Medical Care (becoming more energy intensive)
- Changing demographics; an ageing population
- Huge range of building stock (20% of current building stock pre-dates 1948)
- Stringent carbon reduction targets

PhD – Title

Strategic Energy Management within Hospitals: Decision Processes and Governance Systems

Primary Question...

- How can strategic energy management in hospitals be supported?

Key aims of my research are:

- To unpick how decisions are made within NHS Hospitals, and establish how these decisions affect the energy performance of the organisation
- To gain a better understanding of stakeholder needs and relationships
- To critically assess the effectiveness of internal strategies, policies and governance arrangements
- To better understand the barriers to the uptake of energy efficiency within hospitals

Many thanks.....

Darren Jones - Managing Director
Darren.Jones@lowCO2.eu

Ria Larkins – Energy & Sustainability Consultant
Ria.Larkins@lowCO2.eu

Low Carbon Europe, 106 Queens Street, Brighton, BN1 3XF
Tel: 01273 862586,
www.lowCO2.eu