

MSc Health Promotion

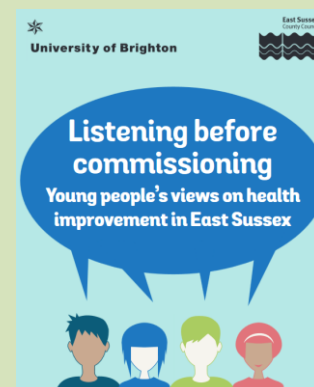
Four pathways leading to **MSc Health Promotion,**
MSc Health Promotion & Management

MSc International Health Promotion,
MSc Health Promotion & Education.



Research Areas

- HIV
- LGBT
- Young Persons Health
- Nutrition and Physical Activity
- Obesity Prevention
- Alcohol
- Diabetes and chronic disease self management
- Infant feeding and breastfeeding
- Inequalities and social determinants of health
- Formative development of resources
- Resilience
- Settings and whole systems approaches



Topics of Recent Health Promotion dissertations

- What do young people aged 16-18 in further education think about healthy eating, and what does this mean for health promotion?
- Exploring students' decision making within supermarket 'lunchtime meal deals'
- An exploration of yoga as an effective and feasible mental health promotion intervention for adults: a literature review
- Positive Psychology as a means to improve wellbeing of young people in schools: A critical interpretive synthesis
- Post-stroke community patients experiences of a Secondary Stroke Prevention (SSP) Package and their views on how it could be improved?' a work based formative evaluation.
- Exploring the issue of obesity amongst married Saudi Arabian women in Taif city, through a socio-ecological framework



Destinations of recent students

- Local Public Health commissioning Team
- Local public or environmental health project teams
- Student or college health and welfare
- NGO project implementers or coordinators
- Setting up innovative community projects, eg urban gardens
- Returning to existing health roles, but with increased focus or scope to initiate health promotion projects within their role
- Sexual health and/or young persons health and welfare

For more information or to apply, see:

www.brighton.ac.uk/hss/courses

[healthpromotionbrighton blog](#)

E: nam.pg@brighton.ac.uk or c.williams2@brighton.ac.uk

T: +(44) 01273 644158 or 01273 644080



University of Brighton