



*Follow the buzz*



# Bee and Pollination Festival 2019

at the University of Bristol Botanic Garden

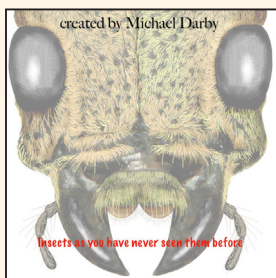
Open 10am-5pm,  
31 Aug – 1 September

**10th Year**



# Bee Festival highlights...

**Demonstrations** will range from beekeeping techniques and the workings of a live hive, to learning how to build bee skeps and weave enchanting willow sculptures.



A new attraction this year is the fascinating exhibition in the Bradley Room by Michael Darby, entitled **Insect Armageddon!** You will not have seen beetles and weevils like this before.



Try your skill at identifying the honey in **honey cakes**. Bristol Beekeepers have commissioned Zest to make a range of cakes including dairy and gluten free options.



We welcome **Phil Savoie**, biologist and award-winning nature photographer who takes you on a photo safari into the private lives of native bees.



During the weekend join the **IsamBards Poetry Quartet** in a stroll around the Garden and hear them recite enchanting site-specific poems.



Bee enthusiasts will be pleased to know we will be featuring the latest information about the menace of the **Asian hornets**.



Hive demonstrations, wildlife exhibits, displays, talks, willow weaving, bee-friendly plants



**Welcome** to our annual Festival weekend event dedicated to bees, pollination and honey.

The importance of insects as pollinators in maintaining healthy ecosystems and agricultural systems is well understood. The worrying demise of their populations and habitats is frequently in the news.

This year's Bee and Pollination Festival, now in its tenth year, brings together science and research with natural history and beekeepers to provide an amazingly stimulating festival for everyone.

Of particular note are the talks by experts in their field. With exhibits and demonstrations, workshops and children's trails, the Festival weekend provides a great activity for families.



And what's good for pollinators is often good for people's wellbeing too – flowers, sunshine and a long summer – so come along and enjoy the festival.

**Nicholas Wray, Curator  
University of Bristol  
Botanic Garden**

**David Thorne, Bristol Beekeepers**



## **Bee Festival opening times:**

10am-5pm, Saturday and Sunday. For normal Garden opening times see p12 or visit: **[www.bristol.ac.uk/botanic-garden](http://www.bristol.ac.uk/botanic-garden)**

*We would like to thank Landcare Trees for their support*

*Hive demonstrations, wildlife exhibits, displays, talks, willow weaving, bee-friendly plants*





## Saturday programme

- 10.00-5.00pm** Michael Darby *'Facing up to Beetles'* exhibition
- 11.00 & 2.00pm** Bristol Poets Poetry walk
- 11.00-11.30am** Prof. Jane Memmott, *'Who Pollinates Your Daily Food and Why it Matters'* **L**
- 12.00-12.45pm** Botanic Garden tour \*
- 2.00-2.30pm** Phil Savoie *'Wild Bees in my Garden'* **L**
- 2.15-3.00pm** Botanic Garden tour \*
- 3.00-3.45pm** 'Live Hive' Beekeeping demonstration
- 3.00-3.30pm** Lynne Ingram *'An introduction to the Asian Hornet'* **L**
- 4.00-4.30pm** Matt Cracknell *'Creating places where people and wildlife thrive'* **L**
- 5.00pm** Close

**\* Tours start at the Welcome Lodge. No booking required**

**L Talks take place in the Linnaeus Study Room – see map overleaf**

### Free talks

Throughout the weekend there will be a programme of easily accessible talks by scientists and specialists, including:

**Professor Jane Memmott**, University of Bristol School of Biological Sciences and Director of the Botanic Garden. *'Who pollinates your daily food and why it matters.'* An overview of how important pollinators are in helping to provide our food including some unusual examples.

**Lynne Ingram**, Master beekeeper from Somerset who has been working with scientists from Exeter University and Jersey beekeepers in the fight against deadly Asian hornets which are wreaking havoc on honeybees in the Channel Isles. She will give us the latest updates on the perils of the Asian hornet.

**Phil Savoie** will talk about *'Wild Bees in my Garden.'* He is a biologist and award winning nature photographer and will take you on a photo safari peeking into the private lives of native bees.



*Hive demonstrations, wildlife exhibits, displays, talks, willow weaving, bee-friendly plants*







## Sunday programme

- 10.00-5.00pm** Michael Darby 'Facing up to Beetles' exhibition
- 11.00 & 2.00pm** Bristol Poets Poetry walk
- 11.00-11.30am** Roz & Claire Ernsting, from Bristol Beekeepers 'Our Introduction to Beekeeping'
- 11.45-12.30pm** 'Live Hive' Beekeeping demonstration
- 12.00-12.45pm** Botanic Garden Tour \*
- 12.00-12.30pm** Dr. Rowena Jenkins 'The medicinal potential of honey' **L**
- 2.00-2.30pm** Dr. Andy Higginson, 'What bees want. Influences on foraging behaviour' **L**
- 2.15-3.00pm** Botanic Garden tour \*
- 3.00-3.45pm** 'Live Hive' beekeeping demonstration
- 3.00-3.30pm** Monica Barlow, Bees for Development 'What's the science behind the buzz?' **L**
- 4.15pm** Bristol Honey Festival: Presentation of prizes.
- 5.00pm** Close

**Monica Barlow**, from the global charity 'Natural beekeeping. What's the science behind the buzz?'. Monica will talk about current research in natural beekeeping with examples from their work in Africa and research being undertaken in Europe and America.

**Roz & Claire Ernsting** from Bristol Beekeepers will give a talk on 'Our Introduction to Beekeeping'.

**Dr Rowena Jenkins**, lecturer in Microbiology and Infectious Disease in the College of Medicine at Swansea University will talk on her research on

the antimicrobial activity of Manuka honey against antibiotic-resistant strains of certain bacteria.

**Dr Andy Higginson**, Senior Lecturer in Psychology, College of Life and Environmental Sciences, University of Exeter. 'What bees want': what are the influences on their foraging behaviour - energy, predation risk, body damage, and heat.

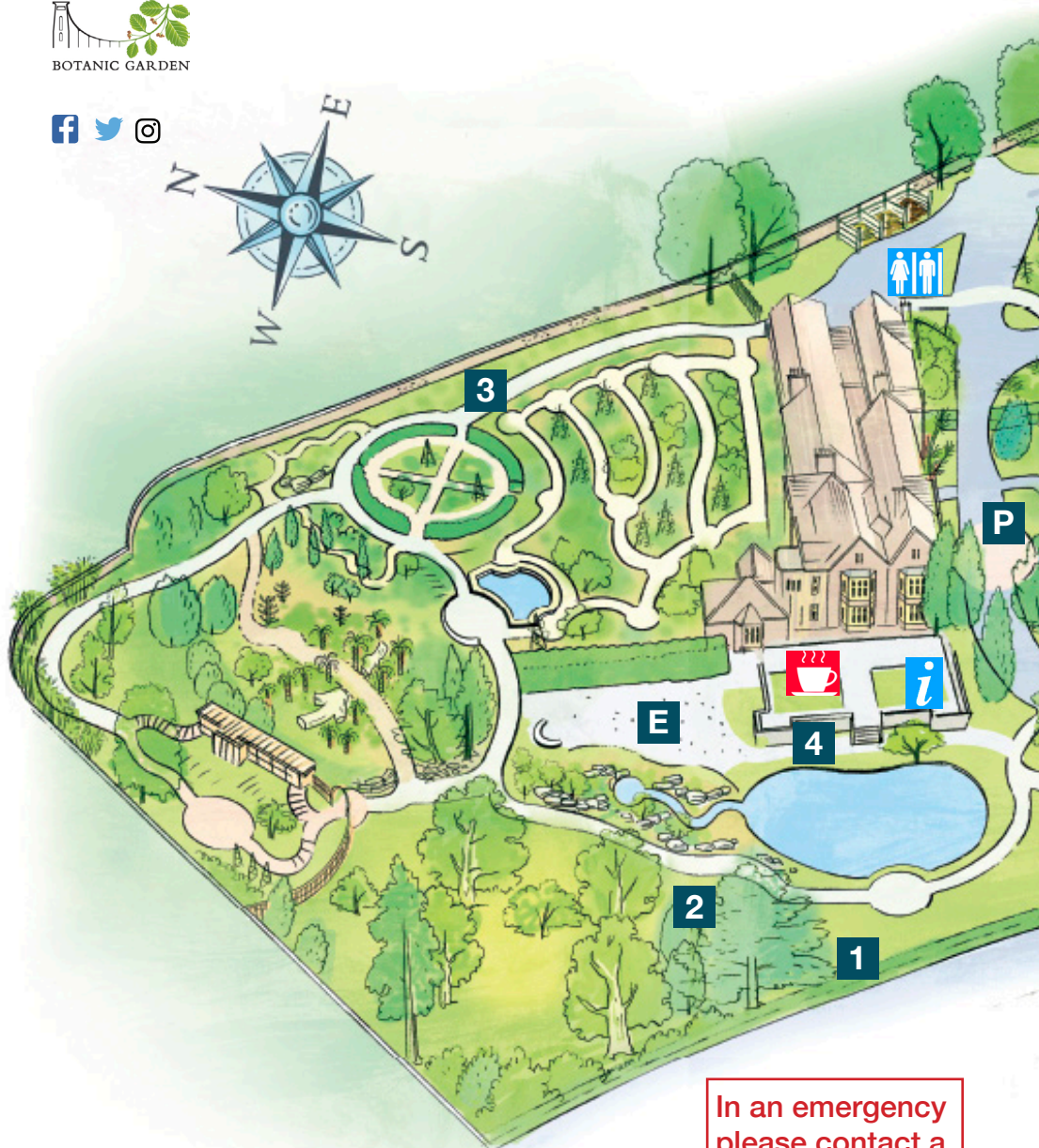
**Matt Cracknell**, Project Manager, Feed Bristol, creating places where people and wildlife thrive with this urban food growing project as an example.

Hive demonstrations, wildlife exhibits, displays, talks, willow weaving, bee-friendly plants



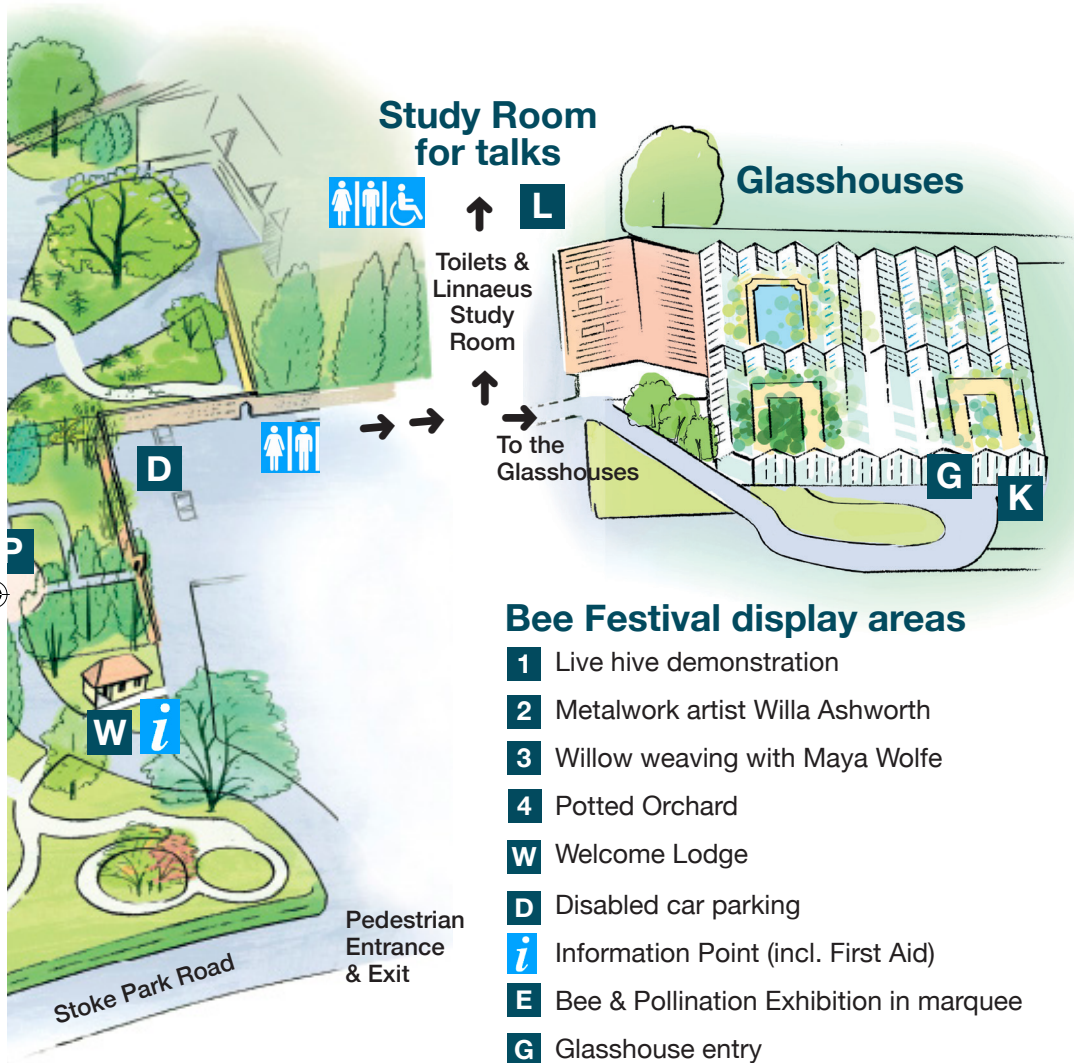


# University of Bristol Botanic Garden





In an emergency  
please contact a  
member of staff  
on 07990 540007





## Bee Festival display areas

- 1** Live hive demonstration
- 2** Metalwork artist Willa Ashworth
- 3** Willow weaving with Maya Wolfe
- 4** Potted Orchard
- W** Welcome Lodge
- D** Disabled car parking
- i** Information Point (incl. First Aid)
- E** Bee & Pollination Exhibition in marquee
- G** Glasshouse entry
- K** Kelvin Bush Orchids
- L** Talks in Linnaeus Study Room
- P** Plant Nurseries
-  Refreshments
-  Toilets (incl. disabled)



First aid in  
Welcome Lodge,  
Information point  
and Glasshouses





# Friends of the Botanic Garden

The Friends have supported and promoted the development of the Botanic Garden since their foundation in 1975. Through our members' subscriptions as well as gifts and legacies we are proud to provide valuable funds for Garden projects and the training of future horticulturalists.

Membership includes; **free unlimited entry to the Garden** as well as a programme of lectures (see below), four newsletters a year, seeds from the Botanic Garden seed list and reciprocal entry to Oxford Botanic Garden and Harcourt Arboretum.

There are also opportunities to volunteer in the Botanic Garden as guides or stewards for events as well as gardening, for which there is always a waiting list.

## If you join this autumn your membership will be valid until December 2020

Annual membership runs from 1 January but take advantage of this special offer and enjoy the Garden for up to 4 months extra – no renewal until January 2021



For more information ask at the entrance gate or at the Friends' red-topped gazebo on the west terrace or contact Membership Secretary, Sue Beech, at [membership@fubbg.co.uk](mailto:membership@fubbg.co.uk)

### Friends' lecture programme 2019-2020

- \* **19 September.** Timothy Walker. *Plant hunting in Eastern Anatolia*
- \* **17 October.** Leif Bersweden. *The orchid hunter: a summer in search of our tresses and twayblades*
- \* **21 November.** James Cross, Head Gardener, Bishop's Palace Gardens, Wells. *The Bishop's Palace Gardens, past, present and future*
- \* **16 January.** Rory Dusoir. *Planting the Oudolf Gardens at Hauser and Wirth.*
- \* **20 February.** Nick Tew, PhD student, UoB School of Biological Science. *Food for insect pollinators in towns and cities.*
- \* **19 March.** Dr Kálmán Könyves, botanist and horticulturalist, RHS Wisley. *How DNA changed plant taxonomy*

**Venue:** The Frank Theatre, Wills Physics Laboratory, Tyndall Avenue, Bristol BS8 1TL.  
**Admission:** Free to Friends (membership card required). Visitors will be asked for a donation (suggested £5). No booking required.





## Bee Festival exhibitors...

A host of exhibition stands, tastings, sales, demonstrations and information including:

- \* **Avon Organic Group:** promotes organic growing
- \* **Avon Wildlife Trust:** largest local charity. Works to protect wildlife in the west of England
- \* **Beans and Herbs:** bee-friendly flower and vegetable seeds
- \* **Bee Depot:** everything a beekeeper could dream of
- \* **Bee Happy Plants and Seeds,** 'The Pollinators' Choice'. A not-for-profit organic grower of plants to encourage bees' wellbeing
- \* **Bees for Development:** global support of beekeepers
- \* **School of Biological Sciences,** University of Bristol
- \* **Bristol Beekeepers Association**
- \* **Bristol Naturalists Society:** promoting interest in local nature
- \* **Bumblebee Conservation Trust**
- \* **Chris Spark,** skep maker and story teller (Sunday only)
- \* **Eric Gillespie,** vegetable grower, St. Giles Allotments
- \* **Feed Bristol,** Avon Wildlife Trust's six acre outdoor learning hub and native wildflower nursery
- \* **Filberts of Dorset,** bringing beeswax goodness to everyday living
- \* **Friends of the Downs and Avon Gorge:** raising awareness and encouraging interest in the Downs
- \* **Friends of the University of Bristol Botanic Garden**
- \* **Hoo House Nursery:** perennial border and alpine plants (Sunday only)
- \* **Jenny Brooks:** botanical artist and Botanic Garden tutor
- \* **Kelvin Bush Orchids:** speciality orchid grower
- \* **Mad Apple Cider:** Somerset cider tasting
- \* **Maya Wolfe:** willow weaving demonstrations
- \* **Ray Barnett,** Bristol Museums and Bristol Naturalists
- \* **Tynings Climbers:** RHS gold medal winners
- \* **Wanborough Herb Nursery:** herbs and herbaceous plants
- \* **Willa Ashworth:** metalwork sculptor
- \* **Writhlington School Orchid Project:** tropical orchids and unusual flowers

*Hive demonstrations, wildlife exhibits, displays, talks, willow weaving, bee-friendly plants*





## Botanic Garden short courses

*Learn more about plants or acquire new skills with our seasonal series of day and half-day courses...*

**All about trees** with Roger Mellors  
*Saturday 7 Sept 10:00-12:00*

**Herb walk** with Chris Roe  
*Sunday 8 Sept 11:00-12:30*

**All about trees** with Roger Mellors  
*Saturday 14 Sept 10:00-12:00*

**Seasonal gardening – make the best of your garden for autumn**  
*Saturday 21 Sept 10:00-16:00*

**Herb Talk – Tincture making**  
with Chris Roe  
*Saturday 21st Sept 10:00-13:30*

**Propagation workshop**  
*Sunday 22 Sept 10:00-16:00*

**Herb Talk – Physiology of stress**  
with Chris Roe  
*Saturday 28th Sept 10:00-13:30*

**Herb Talk – Back to our senses**  
with Chris Roe  
*Saturday 5th Oct 10:00-13:30*

**Botanical Art Drawing and Painting** with Jenny Brooks  
*Monday 7 Oct – Monday 15 June 13:00-16:00*

**Photography at twilight workshop**  
with Graham Parish  
*Saturday 12 Oct 16:00-19:00*

**Christmas wreath making**  
*Saturday 7th & Sunday 8th Dec 13:00-16:30*

**An introduction to mosses, liverworts, ferns and horsetails**

**An introduction to mosses**

**An introduction to ferns**  
with Dr Paul Smith *Wednesday 23 Oct and Friday 29 Nov 10:00-16:30*

**For further details and to book your place on these and other courses please see [bristol.ac.uk/botanic-garden/courses](http://bristol.ac.uk/botanic-garden/courses)**

## Bristol Beekeepers

Bristol Beekeepers is the local branch of Avon Beekeepers (Charity 271717), part of the British Beekeepers Association.

Bristol Beekeepers provide great opportunities for people to start to learn the 'art' of beekeeping, through beginners' courses in winter, and hands-on training at our apiary, Honeycombe Farm, (near Cribbs Causeway) in summer.

We give support and encouragement to develop practical skills and knowledge from beginners' 'taster days' through to advanced level technical modules. We give talks about beekeeping to schools and community groups and also provide a swarm collection service.

[www.bristolbeekeepers.org.uk](http://www.bristolbeekeepers.org.uk)



*Hive demonstrations, wildlife exhibits, displays, talks, willow weaving, bee-friendly plants*





# Filberts of Dorset BEEKEEPERS & MAKERS

FUNCTIONAL AND SUSTAINABLE BEESWAX PRODUCTS

NATURAL SKINCARE • SOAP • GIFTS & CARDS  
CRAFT KITS • POLISH • CANDLES  
SEEDS FOR BEES • BEES COLONIES  
BEEKEEPING COURSES & SERVICES

## INVESTING IN BRITAIN'S BEES

Bees are at the heart of our business. As beekeepers, we work to improve the ecology around us by supporting bees and their essential work of plant pollination.

Shop online at  
[www.filbertsofdorset.co.uk](http://www.filbertsofdorset.co.uk)  
(free seeds with every purchase),  
or find us in shops around the UK



# What's on at the Botanic Garden...

## Annals of Botany Lecture

The role of botanic gardens as a positive force to mitigate against climate change and biodiversity loss

**Monday 7 October at 7.30pm**

**Dr Paul Smith, Secretary General, Botanic Gardens Conservation International**

Botanic Gardens Conservation International (BGCI) is the world's largest plant conservation network with over 600 members, linking botanic gardens around the world in a shared commitment to save threatened plant species and raise awareness about the importance of plants. Their mission is 'to mobilize botanic gardens and engage partners in securing plant diversity for the well-being of people and the planet'.

**Dr Paul Smith** has been Secretary General of BGCI since March 2015. He is the former Head of Kew's Millennium Seed Bank (MSB) and, during his nine years at the helm, seeds from more than 25,000 plant species were conserved in the MSB.

He has travelled widely, helping to set up botanic gardens and bring people together with a shared interest to do positive work in their environment and local community. His talk will illustrate some of the inspirational people involved in the work of botanic gardens worldwide.

**Venue:** Frank Theatre, Wills Physics Laboratory, Tyndall Avenue, Bristol BS8 1TL. **Free to Friends, students and UoB Staff.** All other visitors: suggested donation £5. See [botanic-garden.bristol.ac.uk](http://botanic-garden.bristol.ac.uk) for full details

ANNALS OF  
BOTANY



## Botanic Garden opening times

The Garden is open to the public seven days a week 10am to 4.30pm until end of November, then weekdays only from December to end of February 10am to 4.30pm (or dusk if earlier).

[botanic-garden.bristol.ac.uk](http://botanic-garden.bristol.ac.uk)



University of Bristol Botanic Garden,  
Stoke Park Road, Bristol BS9 1JG  
T: 0117 428 2041 E: [botanic-gardens@bristol.ac.uk](mailto:botanic-gardens@bristol.ac.uk)  
[botanic-garden.bristol.ac.uk/](http://botanic-garden.bristol.ac.uk/)

