



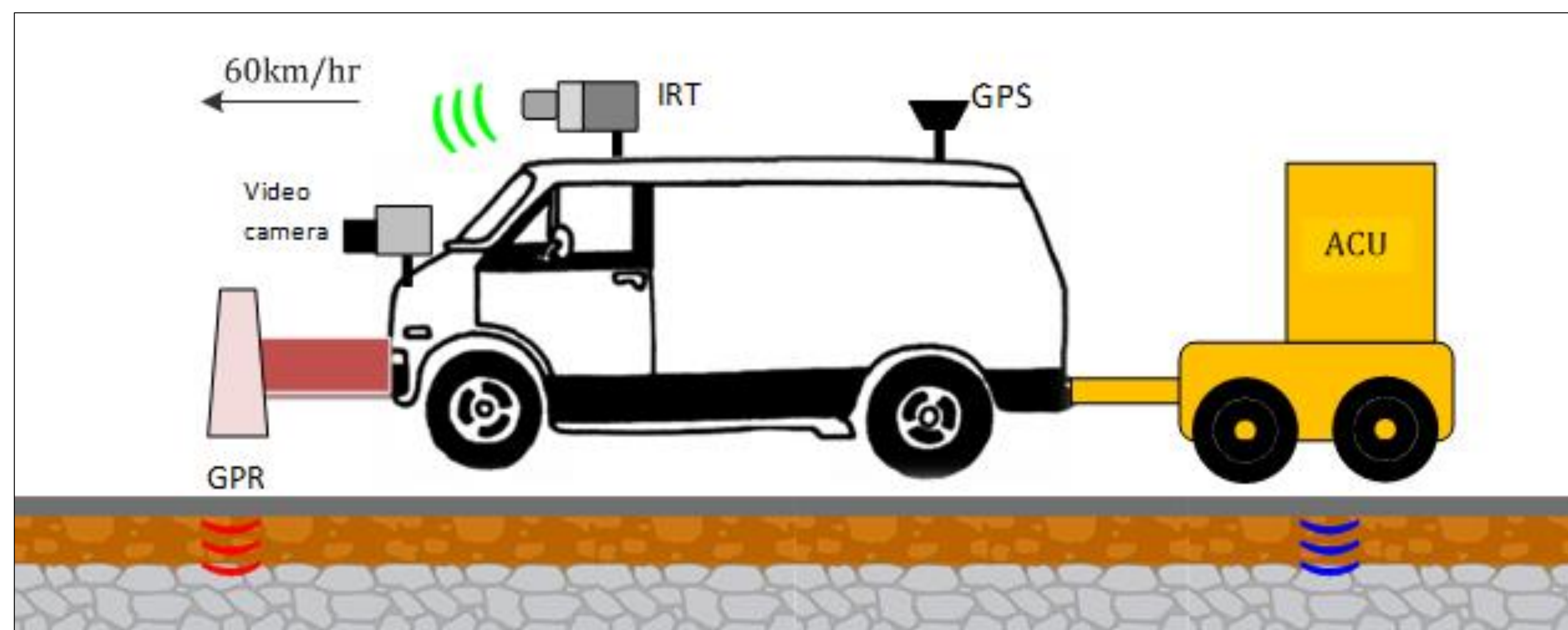
# Road Pavements & Bridge deck Health monitoring / early warning using advanced inspection Technologies



[www.fp7-rpbhealtec.org](http://www.fp7-rpbhealtec.org)

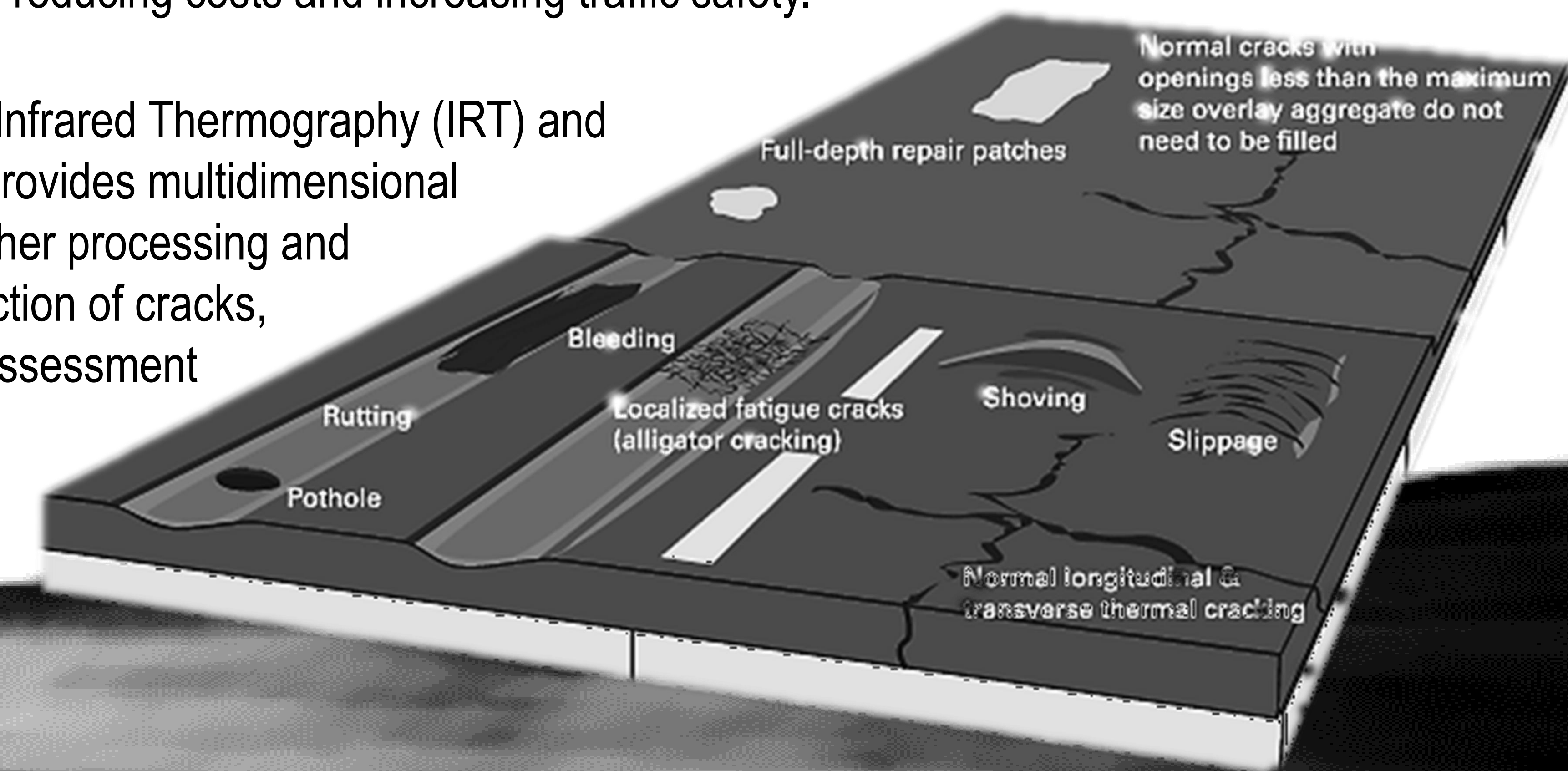
06/2014 - 05/2016

This project has received funding from the European Union's Seventh Framework Programme for research, technological development and demonstration under grant agreement no 606645.



The **RPB HealTec** system is an automated and integrated NDT (Non Destructive Testing) solution for high speed analysis and evaluation of road pavement/bridge deck condition. The major aim of the project is to upgrade and optimize the inspection & maintenance of the European roads, reducing costs and increasing traffic safety.

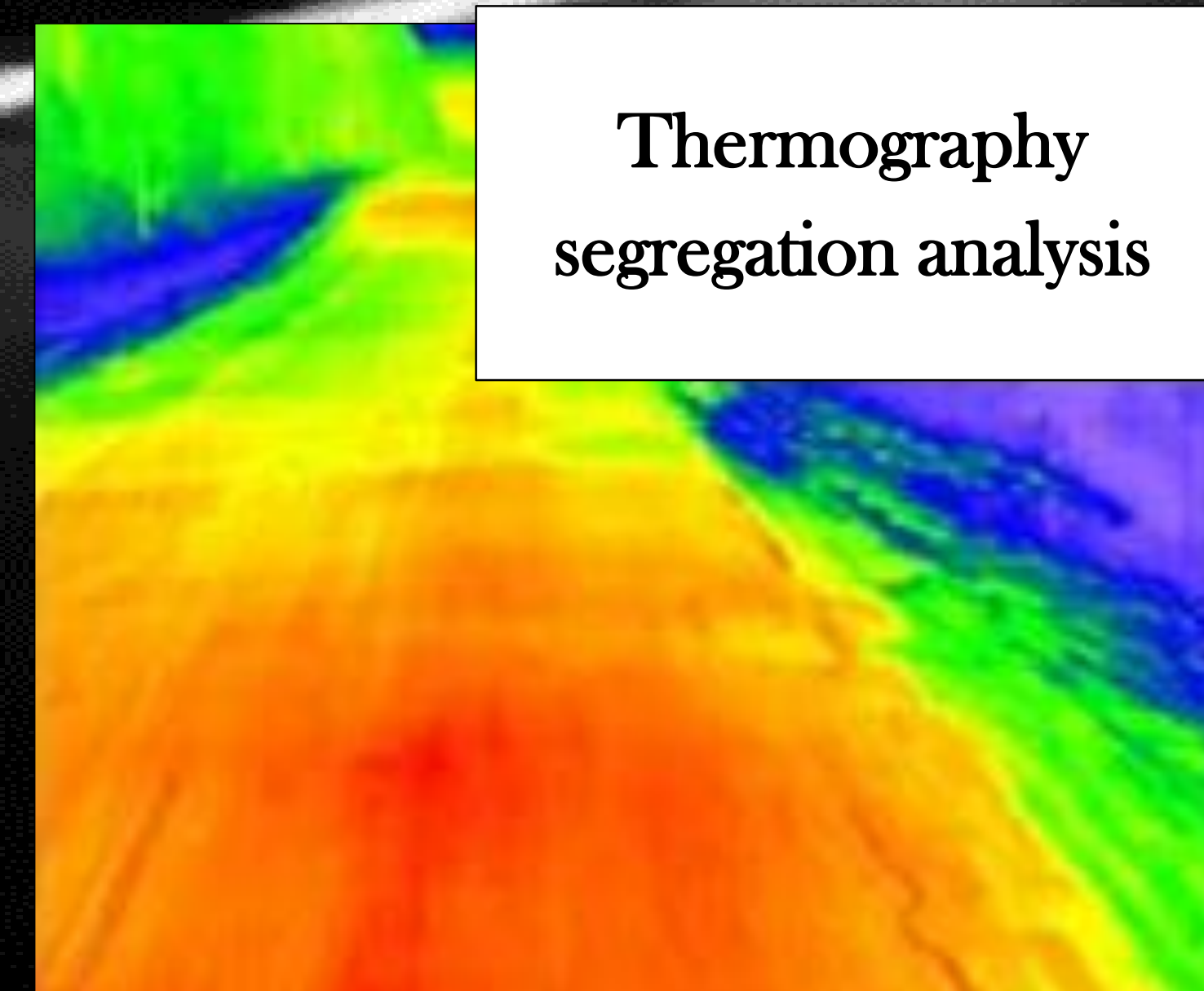
Integration of Ground Penetrating Radar (GPR), Infrared Thermography (IRT) and Air-Coupled Ultrasound (ACU) NDT techniques provides multidimensional information on the road pavement condition. Further processing and fusion of the sensor data will be used in the detection of cracks, subsurface delaminations and other defects for assessment of the cause, extent and rate of deterioration.



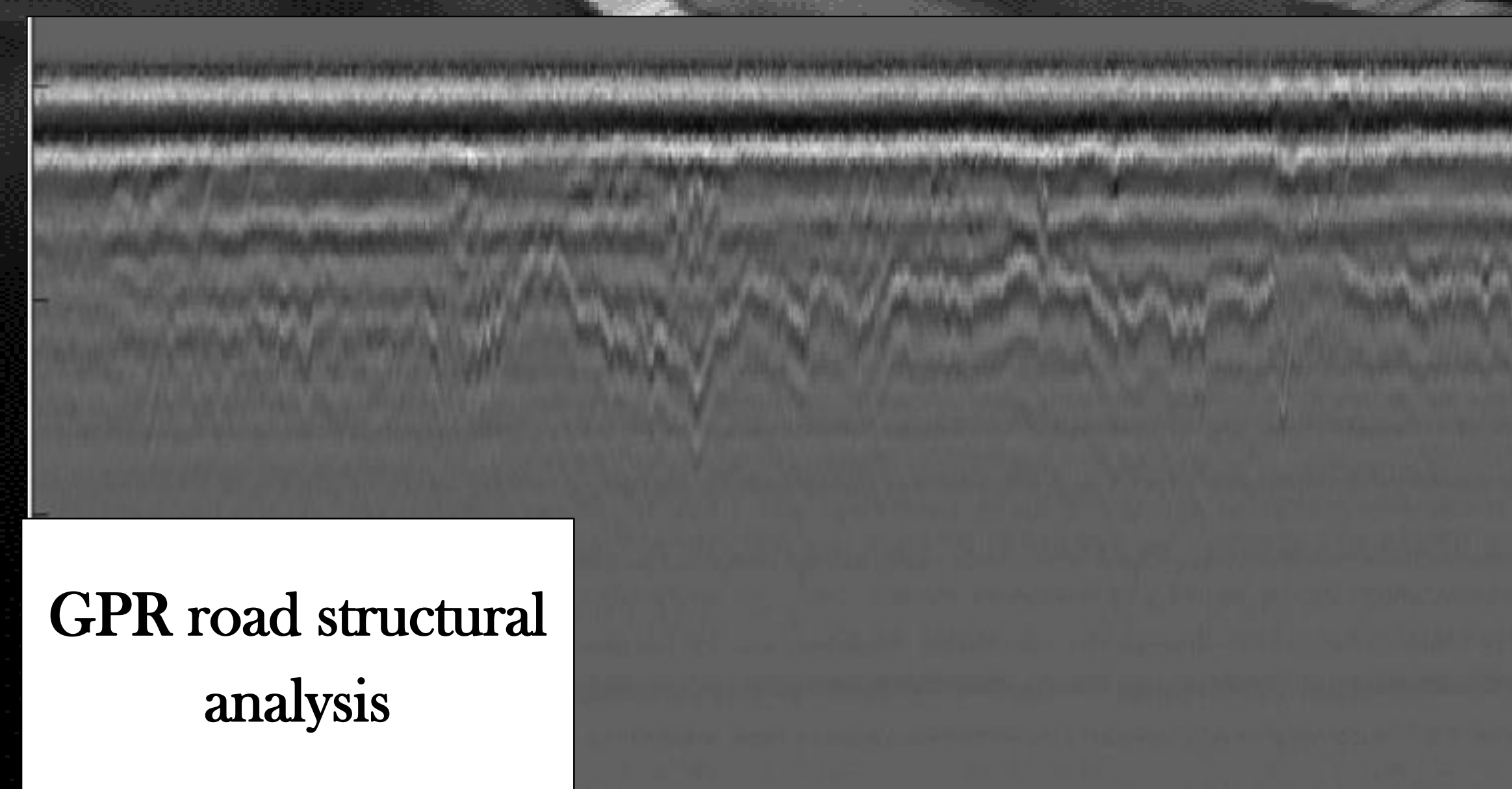
The RPB HealTec concept will benefit in optimisation of road pavement and bridge deck maintenance procedures thus increasing road infrastructure life expectancy. As a consequence it aims for a cost reduction of at least 0.1% on future construction and maintenance in the European road network.



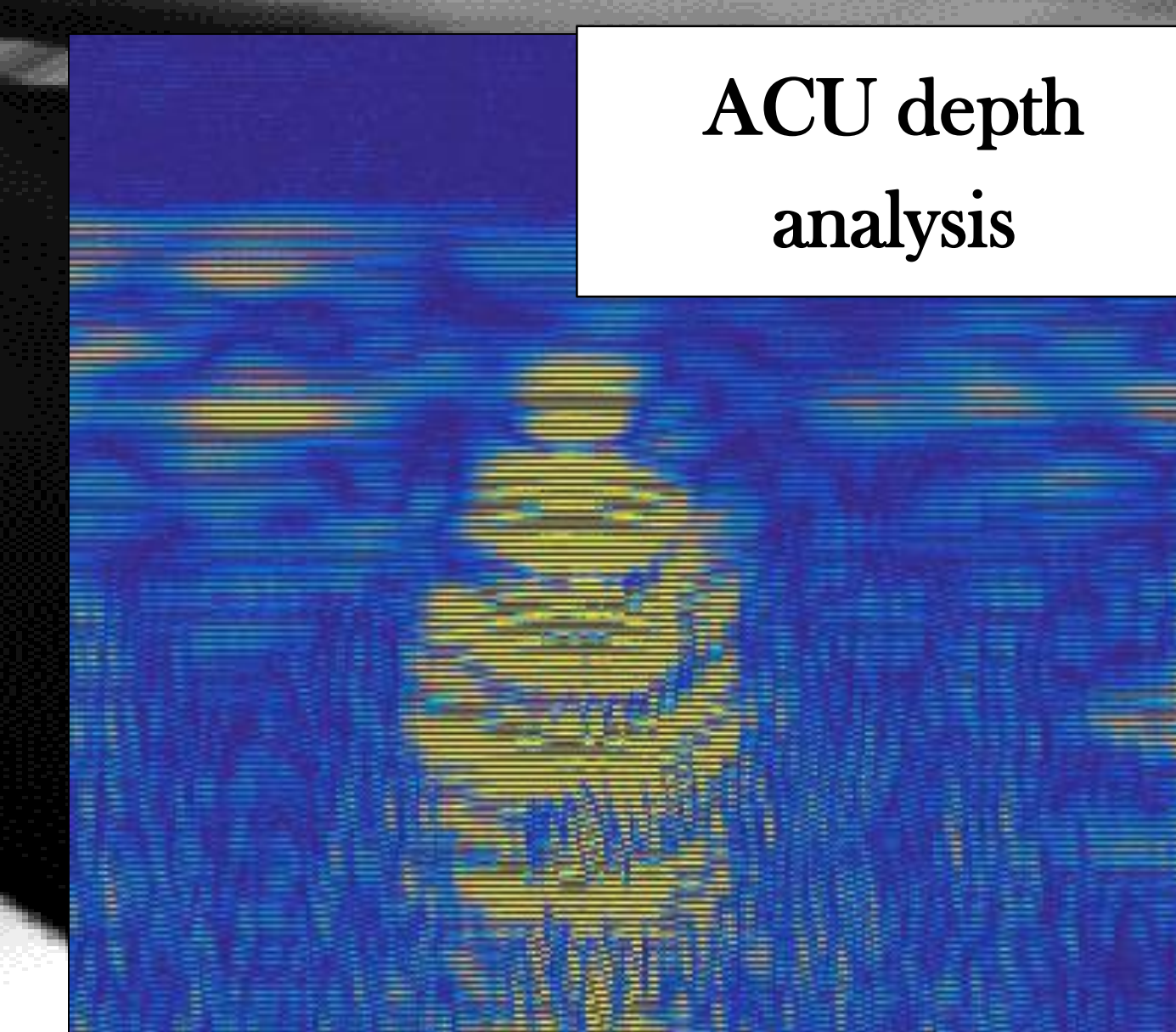
HDV



Thermography segregation analysis



GPR road structural analysis



ACU depth analysis



GIS map