



UNIVERSITY OF
LINCOLN

Human Resources

Human Resources
Staff & Student Diversity
2013-2017



UNIVERSITY OF
LINCOLN

Monitoring and Reporting –

Staff



UNIVERSITY OF
LINCOLN

Gender

	2013/14		2014/15		2015/16		2016/17	
	Female	Male	Female	Male	Female	Male	Female	Male
Academic	42.6%	57.4%	42.1%	57.9%	41.8%	58.2%	42.8%	57.2%
Professional Services	65.8%	34.2%	67.5%	32.5%	65.8%	34.2%	65.3%	34.7%
University	52.6%	47.4%	53.0%	47.0%	51.9%	48.1%	51.6%	48.4%

Disability

	2013/14		2014/15		2015/16		2016/17	
	Disability	None	Disability	None	Disability	None	Disability	None
Academic	4.6%	95.4%	5.0%	95.0%	5.2%	94.4%	5.0%	95.0%
Professional Services	6.7%	93.3%	5.6%	94.4%	5.6%	94.4%	5.5%	94.5%
University	5.5%	94.5%	5.3%	94.7%	5.4%	94.6%	5.2%	94.8%

Ethnicity

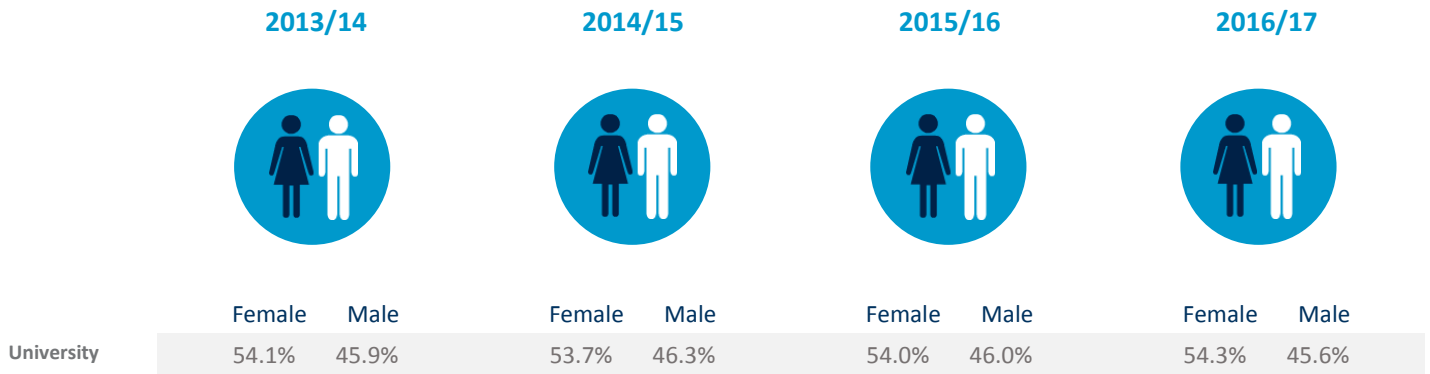
	2013/14		2014/15		2015/16		2016/17	
	BME	Non-BME	BME	Non-BME	BME	Non-BME	BME	Non-BME
Academic	9.8%	89.5%	10.7%	87.8%	10.6%	87.4%	13.1%	85.0%
Professional Services	2.2%	97.3%	2.4%	96.9%	2.8%	97.3%	3.3%	95.9%
University	6.5%	92.9%	7.1%	91.7%	7.4%	91.1%	9.2%	89.3%

*Does not include 'unknown' or 'N/A' data

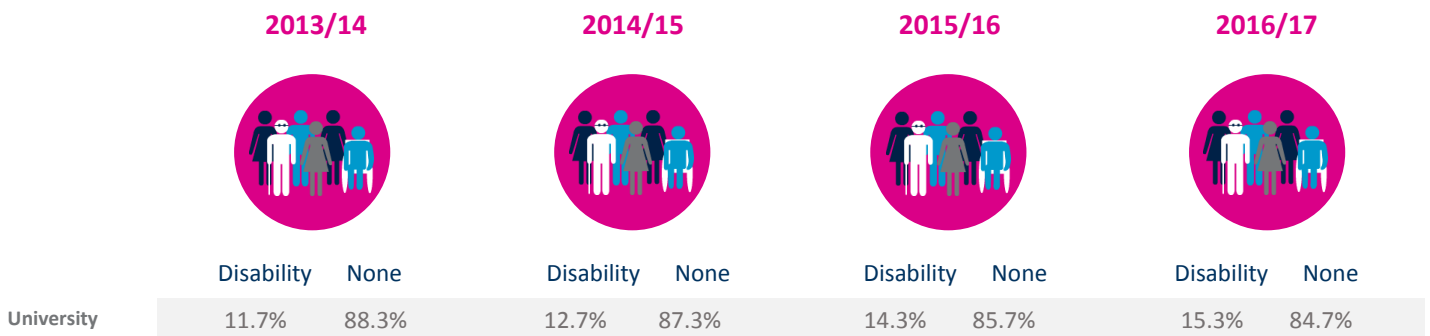
Monitoring and Reporting – Students



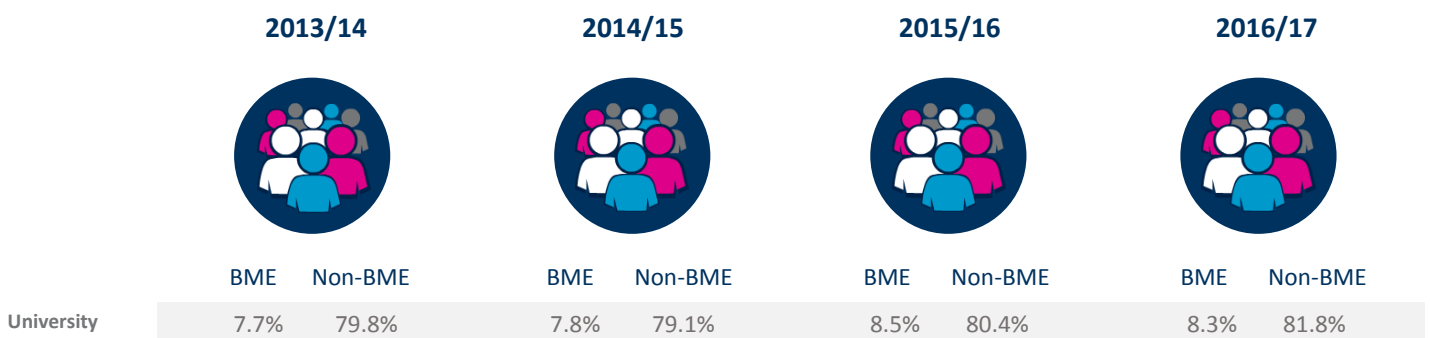
Gender



Disability



Ethnicity



*Does not include 'unknown' or 'N/A' data