



UNIVERSITY OF
LINCOLN

NIHR | Applied Research Collaboration
East Midlands

Equality impact assessment in research

Professor Niroshan Siriwardena MBBS, MMedSci, PhD, FRCGP

Director, Community and Health Research Unit (CaHRU), University of Lincoln

Research director, NIHR Applied Research Collaboration East Midlands

September 2021



@nsiriwardena

Equality impact assessment (EqIA)

- Process involving analysis and practical implementation that helps a service/policy/research/review/project to ensure that different people's needs will be and are being met.
- Aims to ensure consideration given to fairness, flexibility and differential impact to ensure equal opportunity.

Considering differential impact

- In relation to each Protected Characteristic and other relevant factors, project teams are asked to assess whether in relation to inclusion and impact the research has the potential for positive, negative, no or unknown impact
- Researchers are asked to consider how the study can be (re)designed to ensure positive impact

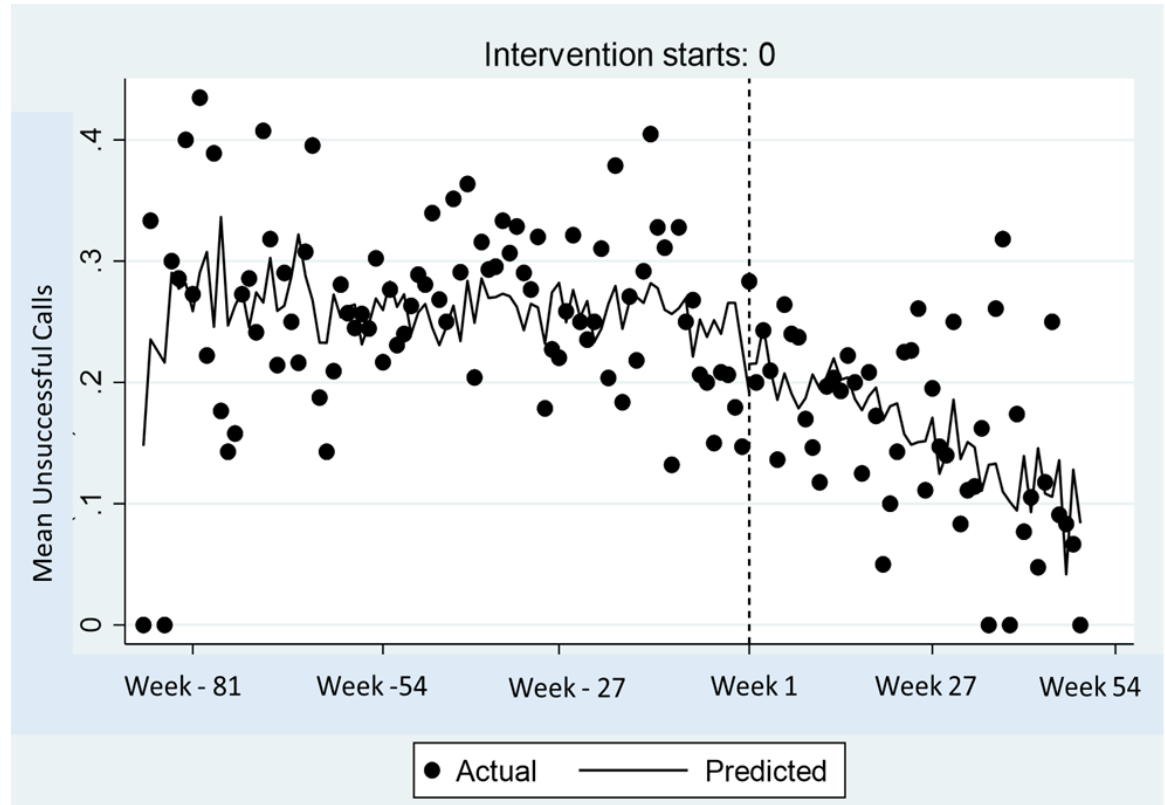
Hypos can strike twice



'HYPOS'
can strike twice

A GUIDE FOR PEOPLE WITH
DIABETES WHO HAVE
HAD A HYPOGLYCAEMIC
'HYPO' EVENT

- What is a 'hypo'?
- Who has 'hypos'?
- How to treat a 'hypo'?
- How to avoid a 'hypo'?



UNIVERSITY OF
LINCOLN

CaHRU
Community and Health Research Unit

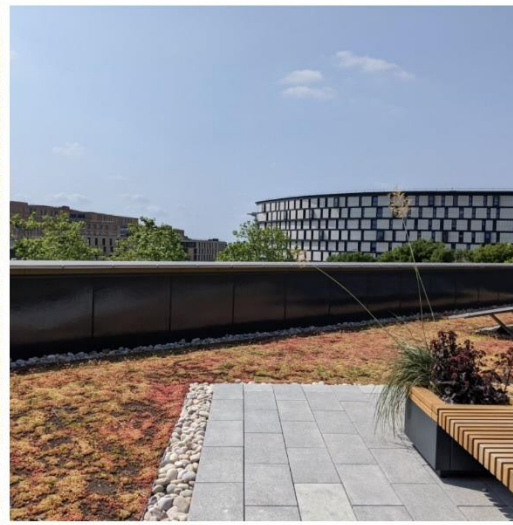
NIHR | Applied Research Collaboration
East Midlands

Community first responders in the current and future healthcare workforce



Impact

- Widening of equality focus, awareness and appreciation
- Changes in study design and planned methods of community engagement
- More effective use of equality data
- Consideration of issues of stigma and discrimination
- Need to think widely about fairness
- Recognition that 'one size does not fit all'



Thank you: nsiriwardena@lincoln.ac.uk



UNIVERSITY OF
LINCOLN

CaHRU
Community and Health Research Unit

NIHR | Applied Research Collaboration
East Midlands