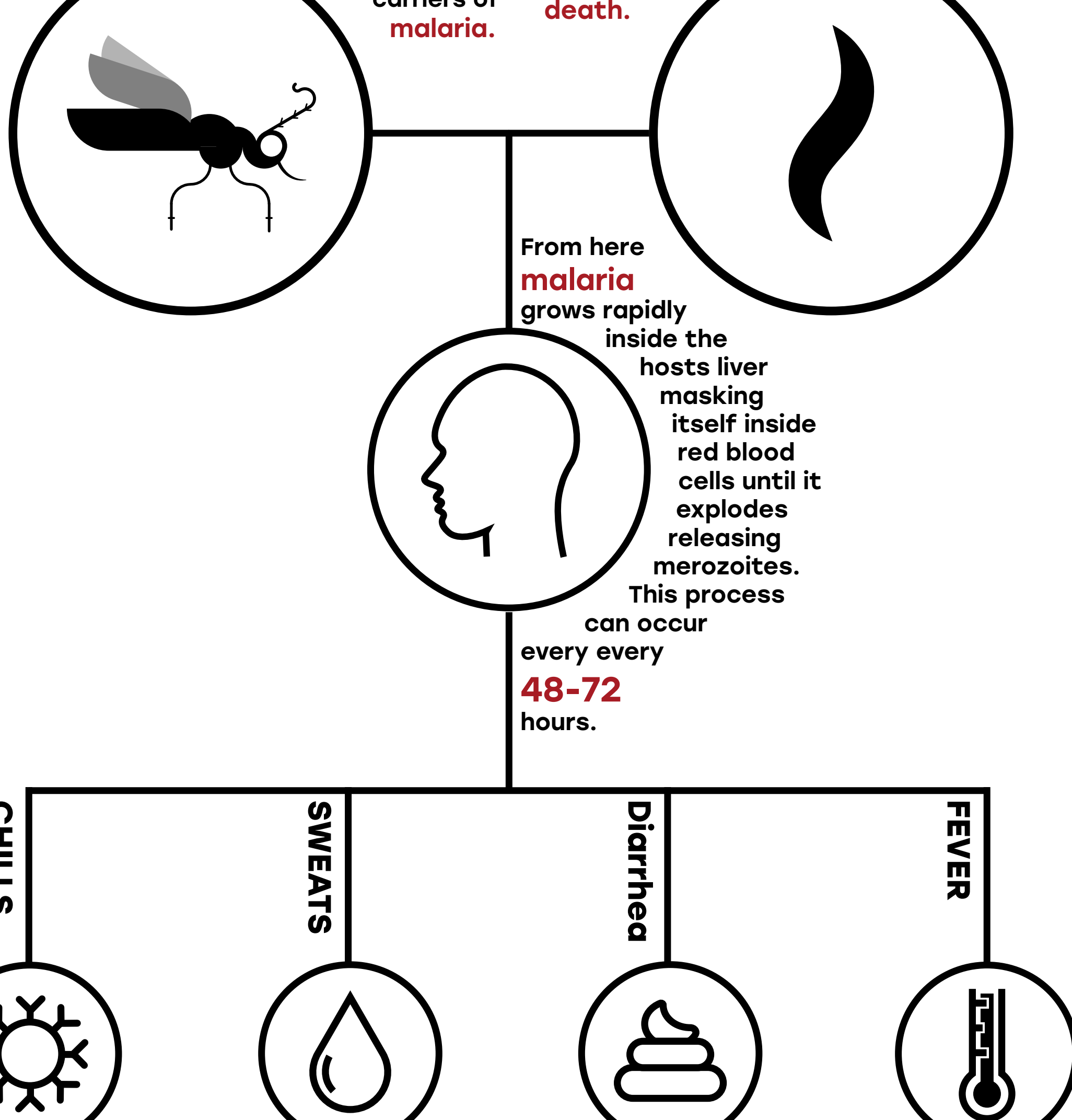


# MALARIA

## WHAT YOU NEED TO KNOW

The female Anopheles mosquito is the carrier of malaria in which it resides in the salivary glands of the insect from a previous blood infected meal. Although, there is over 3,500 species of mosquito only 40 are known carriers of malaria.

Malaria is a serious parasitic disease and without proper medication a malaria infection can turn into anemia, hypoglycemia or cerebral malaria often resulting in learning disabilities, coma and even death.



From here malaria grows rapidly inside the hosts liver masking itself inside red blood cells until it explodes releasing merozoites. This process can occur every every 48-72 hours.



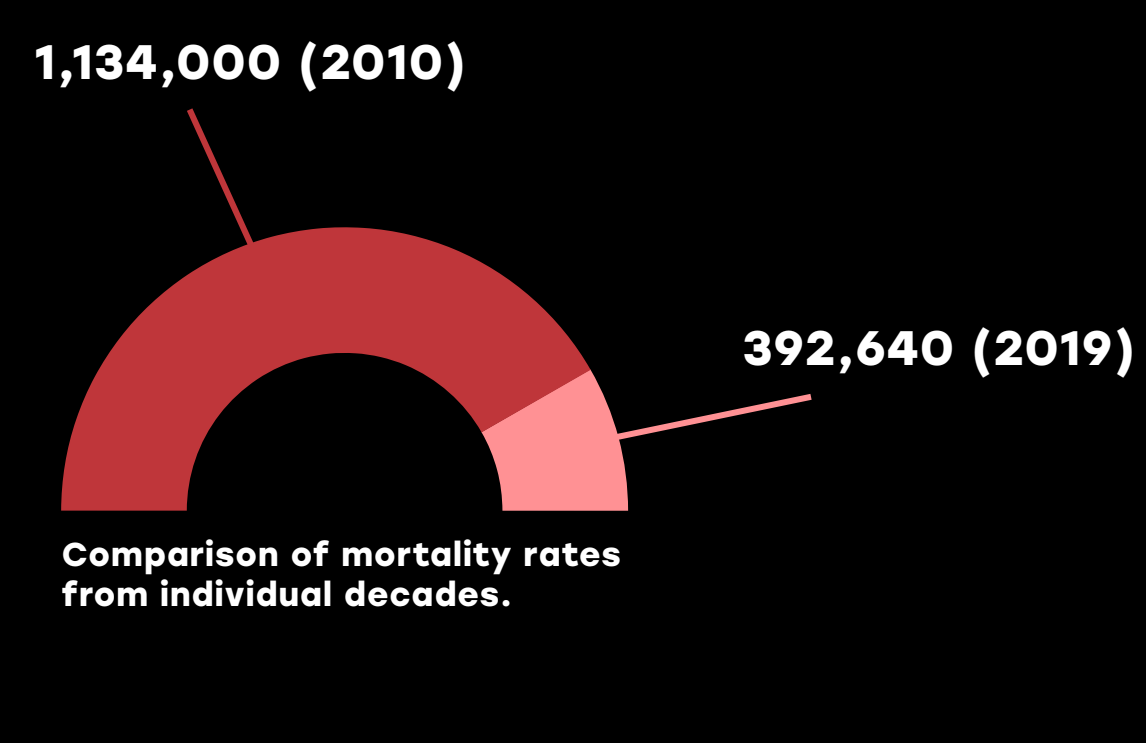
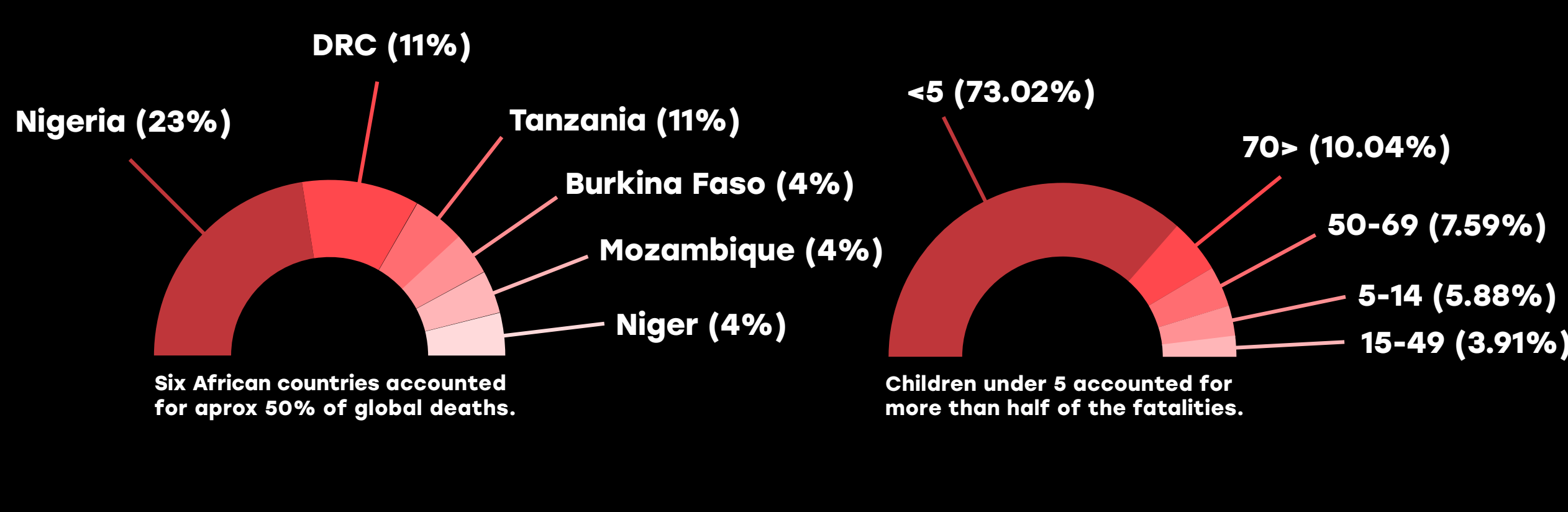
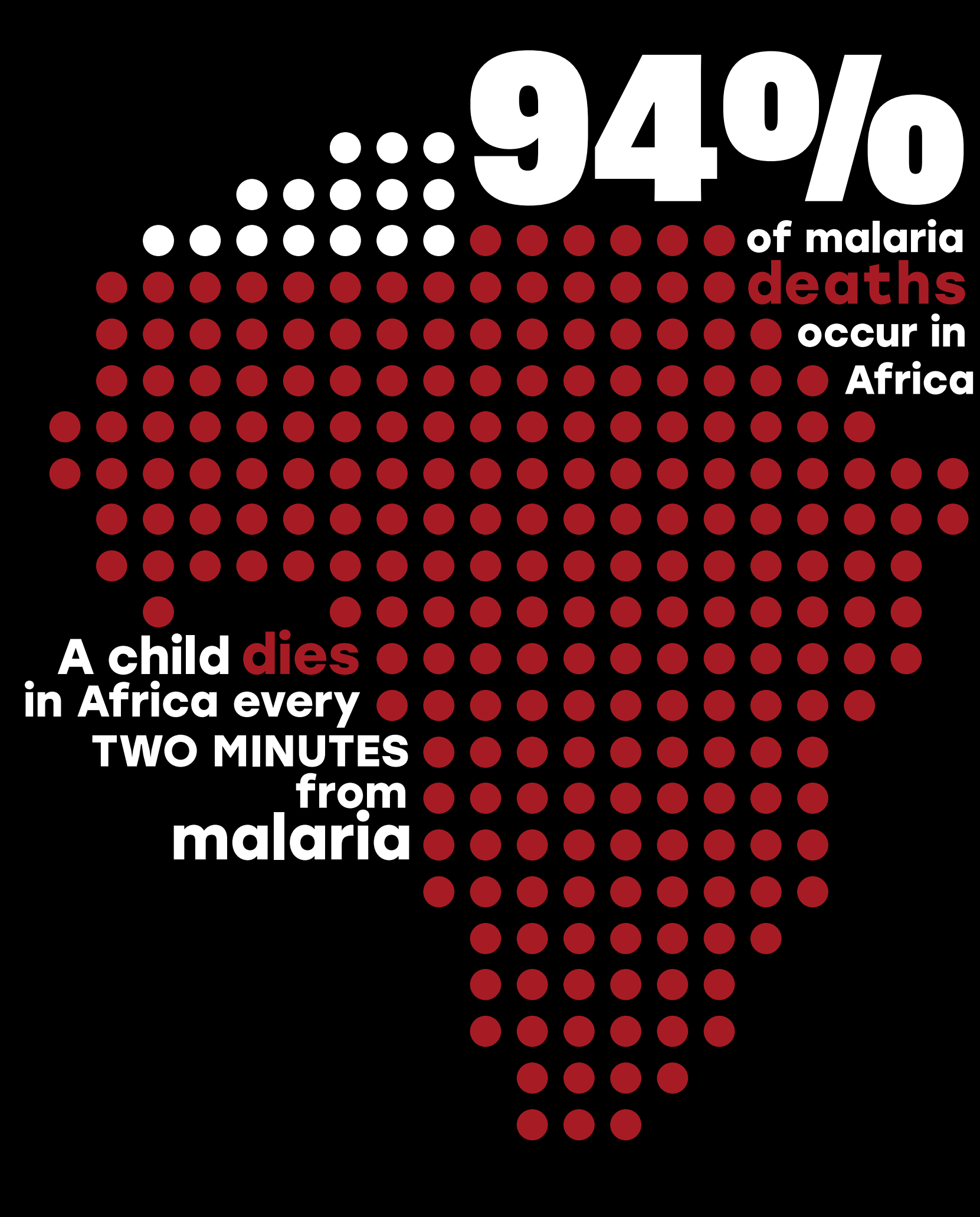
**2,999,000** cases in 2019

- 11 million woman contracted malaria during pregnancy.
- 900,000 children were born with a low birthweight due to malaria.



**409,000** deaths in 2019

- Global malaria deaths per 100,000 people was 9.8 in 2020.
- In the last two decades malaria has fallen by 60%



## HOW DOES IT STACK UP? annual deadliest diseases

