

# Higher

## Revision Paper 1

---

Total marks — 60

SECTION 1 — EXPRESSIVE ART STUDIES — 30 marks

Attempt either Question 1 or Question 2

AND

Attempt either Question 3 or Question 4.

SECTION 2 — DESIGN STUDIES — 30 marks

Attempt either Question 5 or Question 6

AND

Attempt either Question 7 or Question 8.

You may use sketches to illustrate your answers.

Write your answers clearly in the answer booklet provided. In the answer booklet you must clearly identify the question number you are attempting.

Use blue or black ink.

Before leaving the examination room you must give your answer booklet to the Invigilator; if you do not you may lose all the marks for this paper.

**SECTION 1 – EXPRESSIVE ART STUDIES – 30 Marks**

Attempt either Question 1 or Question 2.

Read your selected question and the notes on the image carefully.

**Image for Question 1**



James Morrison 1963      "The Reath" 97 x 57 inches

Oil on Canvas

**Question 1**

With reference to the image above:

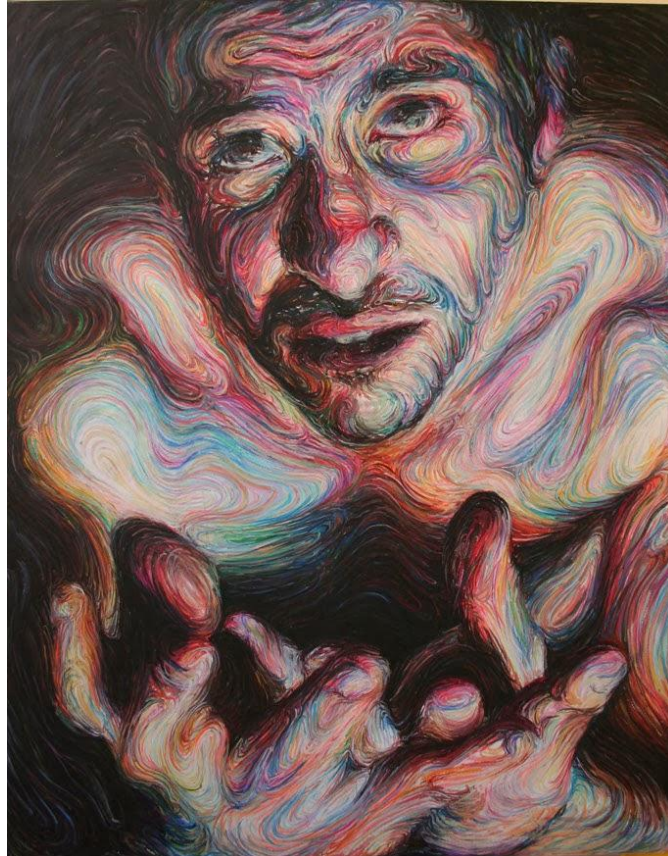
- a) Describe the artists' use of *materials/media and inspiration/influences* within this work.
  
- b) Explain how the artists **combined** use of *materials/media and inspiration/influences* contribute to the overall mood and atmosphere of this work.

## SECTION 1 – EXPRESSIVE ART STUDIES (continued)

Attempt either Question 1 or Question 2.

Read your selected question and the notes on the image carefully.

### Image for Question 2



Nikos Gyftakis (2004-2005) "Selfportrait III"

oil pastel on canvas 190 X 150 cm

### Question 2

With reference to the image above:

- a) Describe the artist use of *composition* and *subject matter* in this work.
- b) Explain how the artists **combined** use of composition *and subject matter* contributes to the overall *visual impact* of this work.

## SECTION 1 – EXPRESSIVE ART STUDIES (continued)

Attempt either Question 3 or Question 4.

### Question 3

Select one or more artwork(s) that you have studied.

- a) Discuss the artist's use/choice of composition and use/choice of a visual element (colour, line, tone, texture, pattern, 2D shape, 3D form) in the artwork.
- b) Explain the influence of *social, cultural* and/or *other factors* on any of the art works discussed.

### Question 4

Select one or more artwork(s) that you have studied.

- a) Discuss the artist(s) use of *working methods* and *use/choice of subject matter* in the artworks.
- c) Explain the influence of *social, cultural* and/or *other factors* on any of the art works discussed.

## SECTION 2 – DESIGN STUDIES – 30 Marks

Attempt either Question 5 or Question 6

Read your selected question and the notes on the image carefully.

### Image for Question 1



White skirt with appliquéed velvet motifs plus sweater and heavy jewellery

Christian Lacroix 1993

### Question 5

With reference to the image above:

- Describe the designer's use of *imagery/surface decoration and function/fitness for purpose* used to create this design.
- Explain how the **combined** use of *imagery/surface decoration and function/fitness for purpose* contributes to making this work appealing to any target market(s)



**SECTION 2 – DESIGN ART STUDIES – 30 Marks**

Attempt either Question 5 or Question 6.

Read your selected question and the notes on the image carefully.

**Image for Question 2**



'August' (Sterling silver, plastic)

length 40cm

Markian Galandiuk

2002

**Question 6**

With reference to the image above:

- a) Describe how the designer has used *inspiration/influences and aesthetics* in this work.
  
- b) Explain how the artists **combined** use of *inspiration/influences and aesthetics* contributes to the overall success of the work.

**SECTION 2 – DESIGN STUDIES (continued)**

Attempt either Question 7 or Question 8

**Question 7**

Select one or more design work(s) that you have studied.

- a) Discuss the designer's use of *aesthetics and use/choice of style* in the designers work(s).
- b) Explain the influence of *social, cultural and/or other factors* on any of the design works discussed.

**Question 8**

Select one or more design work(s) that you have studied.

- a) Discuss the designer(s) *use/choice of materials and aesthetics* in the design work(s).
- b) Explain the influence of *social, cultural and/or other factors* on any of the design works discussed.

**[END OF PAPER]**