

Higher

Revision Paper 2

Total marks — 60

SECTION 1 — EXPRESSIVE ART STUDIES — 30 marks

Attempt either Question 1 or Question 2

AND

Attempt either Question 3 or Question 4.

SECTION 2 — DESIGN STUDIES — 30 marks

Attempt either Question 5 or Question 6

AND

Attempt either Question 7 or Question 8.

You may use sketches to illustrate your answers.

Write your answers clearly in the answer booklet provided. In the answer booklet you must clearly identify the question number you are attempting.

Use blue or black ink.

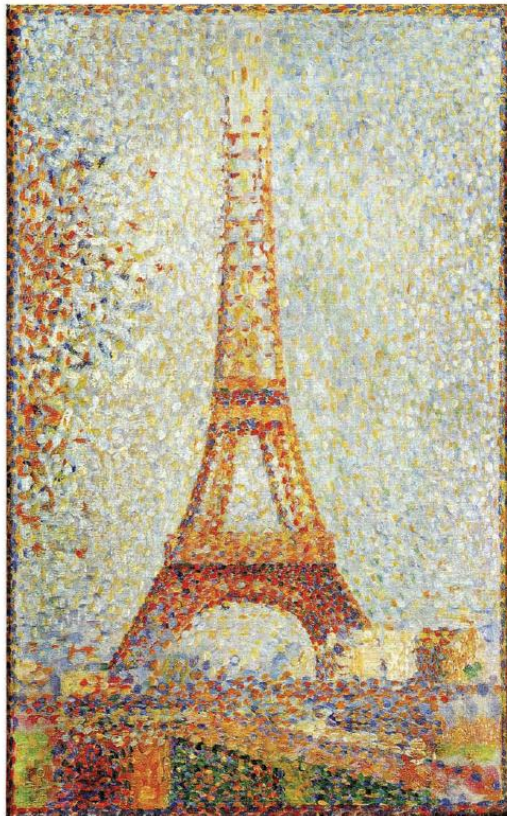
Before leaving the examination room you must give your answer booklet to the Invigilator; if you do not you may lose all the marks for this paper.

SECTION 1 – EXPRESSIVE ART STUDIES – 30 Marks

Attempt either Question 1 or Question 2.

Read your selected question and the notes on the image carefully.

Image for Question 1



Eiffel Tower (1889) by Georges Seurat
oil on panel (24 × 15 cm)

Question 1

With reference to the image above:

- a) Describe the artists' use of techniques and/or technology and the use of a visual element (*colour, line, tone, texture, pattern, 2D shape, 3D form*) in this work.

- b) Explain how the artists **combined** use of use of techniques and/or technology and the use of a visual element contributes to the overall success of this work.

SECTION 1 – EXPRESSIVE ART STUDIES (continued)

Attempt either Question 1 or Question 2.

Read your selected question and the notes on the image carefully.

Image for Question 2



Tamejiro dan Shogo grapples with his enemy under water (1828-29) by Kuniyoshi
woodblock colour print (36 × 25 cm)

Question 2

With reference to the image above:

- Describe the artists' use of *subject matter/imagery and composition* in this work.
- Explain how the artists **combined** use of *subject matter/imagery and composition* contributes to the overall visual impact of this work.

SECTION 1 – EXPRESSIVE ART STUDIES (continued)

Attempt either Question 3 or Question 4.

Question 3

Select one or more artwork(s) that you have studied.

- a) Discuss the artist's use/choice of composition and use/choice of mood atmosphere in the artwork.
- b) Explain the influence of *social, cultural* and/or *other factors* on any of the art works discussed.

Question 4

Select one or more artwork(s) that you have studied.

- a) Discuss the artist(s) use/choice of materials/media and use/choice of subject matter in the artworks.
- b)
- c) Explain the influence of *social, cultural* and/or *other factors* on any of the art works discussed.

SECTION 2 – DESIGN STUDIES – 30 Marks

Attempt either Question 5 or Question 6

Read your selected question and the notes on the image carefully.

Image for Question 1



Velvet and silk jacket with lace blouse and trousers by Valentino.

Question 5

With reference to the image above:

- a) Describe the designer's use of *a visual element (colour, line, tone, texture, pattern, 2D shape, 3D form) and materials/media* in this outfit.

- b) Explain how the artists **combined** use of *a visual element and materials/media* contributes to the overall success of the work.

SECTION 2 – DESIGN ART STUDIES – 30 Marks

Attempt either Question 5 or Question 6.

Read your selected question and the notes on the image carefully.

Image for Question 2



Necklace (Japanese handmade paper and gold plated white metal)
Naoko Yoshizawa
length 40cm

2005

Question 6

With reference to the image above:

- Describe the designer's use of *inspiration/influences and aesthetics*.
- Explain how the artists **combined** use of *inspiration/influences and aesthetics* contributes to the visual impact of the work.

SECTION 2 – DESIGN STUDIES (continued)

Attempt either Question 7 or Question 8.

Question 7

Select one or more design work(s) that you have studied.

- a) Discuss the designer's use of *aesthetics and use/choice of style* in the designers work(s).
- b) Explain the influence of *social, cultural and/or other factors* on any of the design works discussed.

Question 8

Select one or more design work(s) that you have studied.

- a) Discuss the designer(s) *working methods and aesthetics* in the design work(s).
- b) Explain the influence of *social, cultural and/or other factors* on any of the design works discussed.

[END OF PAPER]