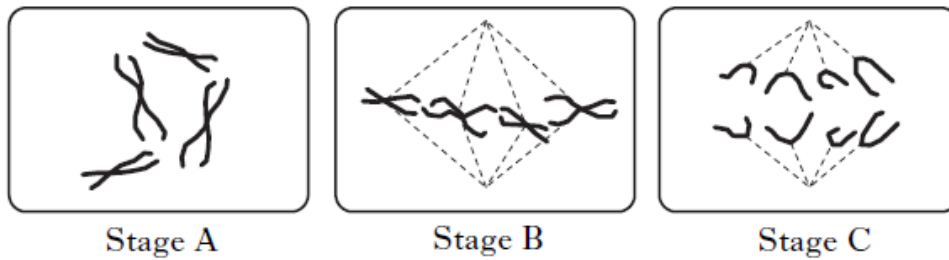


Cell Division

The diagram below demonstrates the stages of mitosis correctly.



1. Label the spindle fibre in the diagram.
2. Stage C would be followed by stage D. Describe what would happen in stage D.

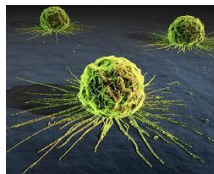
The timings in the stages of mitosis are shown below.

<i>Stage</i>	A	B	C	D
<i>Time (minutes)</i>	88	33	25	54

3. What percentage of the total time of mitosis is spent in stage B?

Cancer

Cancer is a disease which comes in many forms and can have a devastating effect on people's lives. 1 in 3 people will develop cancer in their lifetime. That means that in a class of 20, at least 6 people could develop cancer.



1. What is the link between cancer and cell division?
2. Apart from cell division what other changes in a cell cause cancer?
3. How does cancer spread through the body?

Well done!

Follow the link and play Bust-a-Cell.

<http://info.cancerresearchuk.org/youthandschools/gamesandpuzzles/>