

National 5

Revision

Paper 2

Date — Not applicable

Duration — 1 hour and 10 minutes

Total marks — 40

SECTION 1 — EXPRESSIVE ART STUDIES — 20 marks

Attempt Question 1 and ONE other question.

SECTION 2 — DESIGN STUDIES — 20 marks

Attempt Question 7 and ONE other question.

Before attempting the questions you must check that your answer booklet is for the same subject and level as this question paper.

On the answer booklet, you must clearly identify the question number you are attempting.

You may use sketches to illustrate your answers.

Use blue or black ink.

Before leaving the examination room you must give your answer booklet to the Invigilator. If you do not, you may lose all the marks for this paper.

SECTION 1 — EXPRESSIVE ART STUDIES — 20 marks

Attempt this question.

- 1.** Artists communicate and express their ideas about their subject in variety of ways. Identify **TWO** works by different artists that you have studied. These should be based on similar *subject matter* and/or the same *theme*.

With reference to these works in your answer compare each artist's use of:

- **composition**
- **colour**
- **mood and atmosphere**

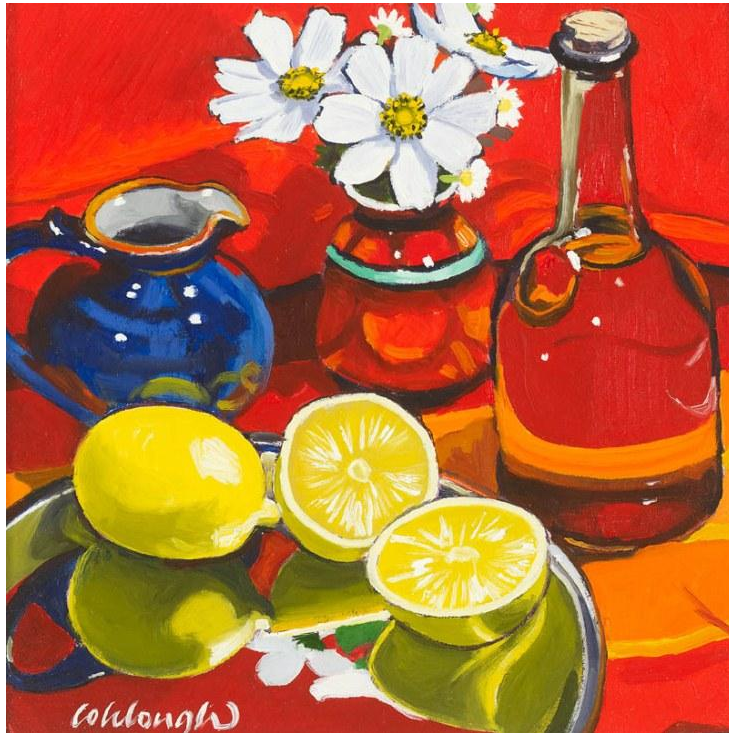
Which of the two works do you find most appealing? Give **TWO** reasons

SECTION 1 — EXPRESSIVE ART STUDIES (continued)

Attempt ONE **question** from Q2, Q3, Q4, Q5 or Q6.

Read your selected question and the notes on the illustration carefully.

Image for Q.2



Frank Colclough
"Study with Antique Bottle"
Oil on Board 10" x 10"

2. Everyday subjects are a source of inspiration for many artists. Comment on the artists approach to the subject matter in this painting. In your answer refer to

- **colour**
- **composition**
- **media handling**

What is your opinion of this approach to still life painting? Give **TWO** reasons.

SECTION 2 — DESIGN STUDIES

Attempt this question.

7. Designers have to show creativity in their approach to developing designs. Identify **two** designs by different designers that you have studied who have worked in the same design area.

With reference to these designs, in your answer compare both designs in terms of:

- *colour*
- *style*
- *target market/audience.*

Which of these two designs is the most successful? Give **two** reasons why.

SECTION 2 — DESIGN STUDIES (continued)

Attempt **one question** from Q8, Q9, Q10, Q11 or Q12.

Read your selected question and the notes on the illustration carefully.

Image for Q11



Pendant, enamel in gold mount with 3 attachments of opal and amethysts. 1900

Designer: Edith Dawson

11. Designers are inspired by many different things. Comment on this design. In your answer, refer to:

- **source of *inspiration***
- ***materials***
- ***target market***

Do you feel this is a wearable piece? Give two reasons.