

Dalkeith High School
N5 Biology
Reproduction (Task 1)

1. a) Why must organisms reproduce?

1

b) Complete the table below to show the features of sexual and asexual reproduction. Place a tick to show whether the feature is true of asexual reproduction or sexual reproduction.

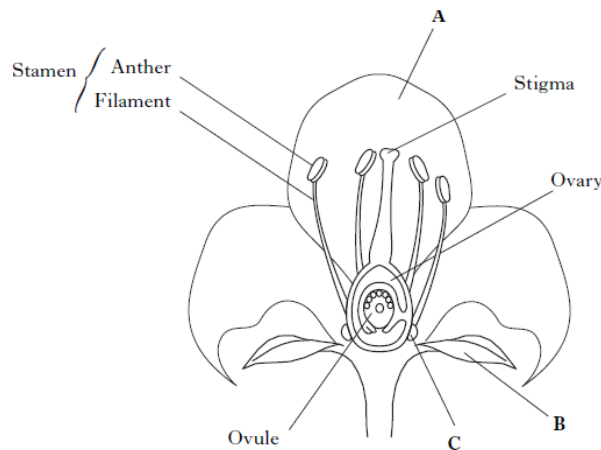
Feature	Asexual	Sexual
One parent is involved		
Increases variation in the population		
Offspring are the same as the parent		
Involves sex cells such as sperm and egg		

2

c) Give one example of asexual reproduction in plants.

1

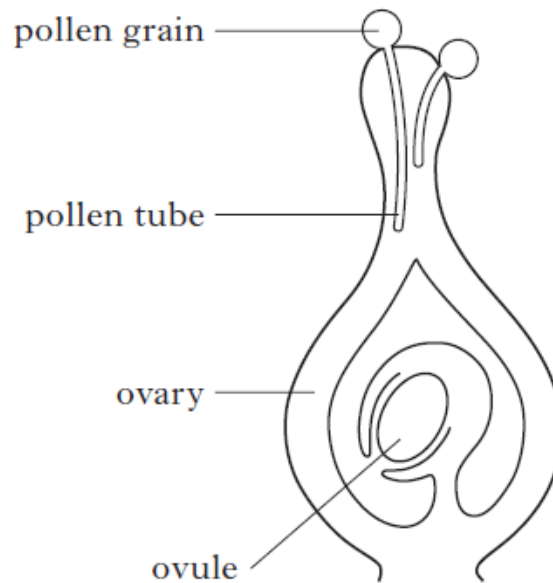
2. The diagram below shows a cross section through a flower.



Complete the table below to show the letter, name and function of parts A, B and C.

<i>Letter</i>	<i>Name</i>	<i>Function</i>
	sepal	protects the bud before opening
	petal	
C		produces and stores a sugary solution to attract insects

3. a) Draw an **X** on the following diagram to show where the pollen tube reaches when its growth is completed.



1

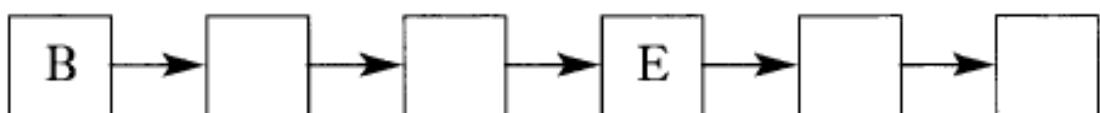
b) Describe the function of the pollen tube.

1

c) The following statements refer to the stages that occur after pollination.

- A Fertilisation takes place
- B A pollen tube grows out from a pollen grain
- C The ovules forms a seed and the ovary forms a fruit
- D The pollen tube grows down through the stigma
- E The male gamete moves towards the ovule
- F The pollen tube grows through the ovary wall

Use the letters of the statements to complete the sequence of stages.



2