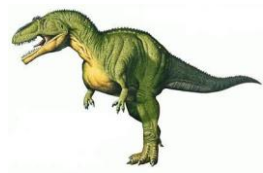


# Jurassic Park Theme



Staff 1: G (G), G (G), F# (F#), G (G), G (G), F# (F#), G (G), A (A), A (A), C (C), C (C), B (B), G (G)

Staff 2: 5 D (D), A (A), B (B), G (G), A (A), D (D), G (G), C (C), B (B), B (B), A (A), A (A), G (G), F# (F#)

Staff 3: 9 G (G), G (G), D (D), C (C), G (G), F# (F#), G (G), D (D), C (C), G (G), F# (F#), G (G), D (D), F (F), G (G), F# (F#)

Staff 4: 13 G (G), G (G), D (D), C (C), G (G), F# (F#), G (G), D (D), C (C), G (G), F# (F#), G (G), F# (F#), G (G)

## Questions

1) How many beats are in the bar in this piece of music?

\_\_\_\_\_

2) There is a repeat sign in this music. Draw a repeat sign.

3) Circle a dotted minim rhythm.

4) The melody in bar 9 and bar 13 is exactly the same. What is this called?

\_\_\_\_\_

5) Circle a semibreve rhythm.

6) How many beats does a quaver last for? \_\_\_\_\_

7) Who composed this piece of music? \_\_\_\_\_