

MUSIC



phillipmartin.info

S1 Homework



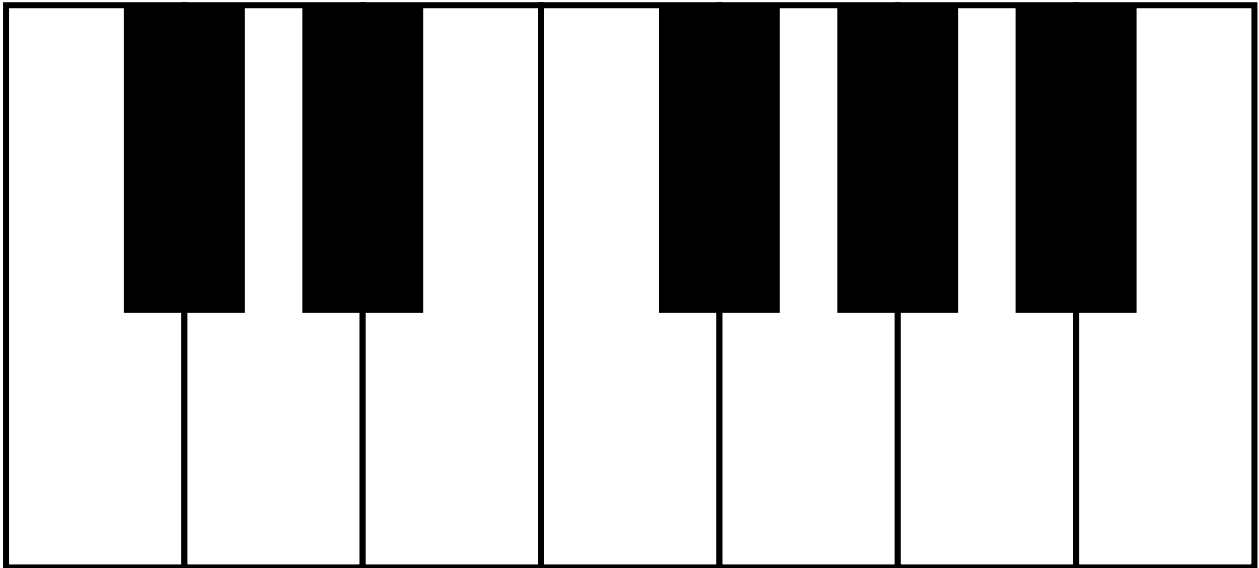
Name: _____

Class: _____ Teacher: _____

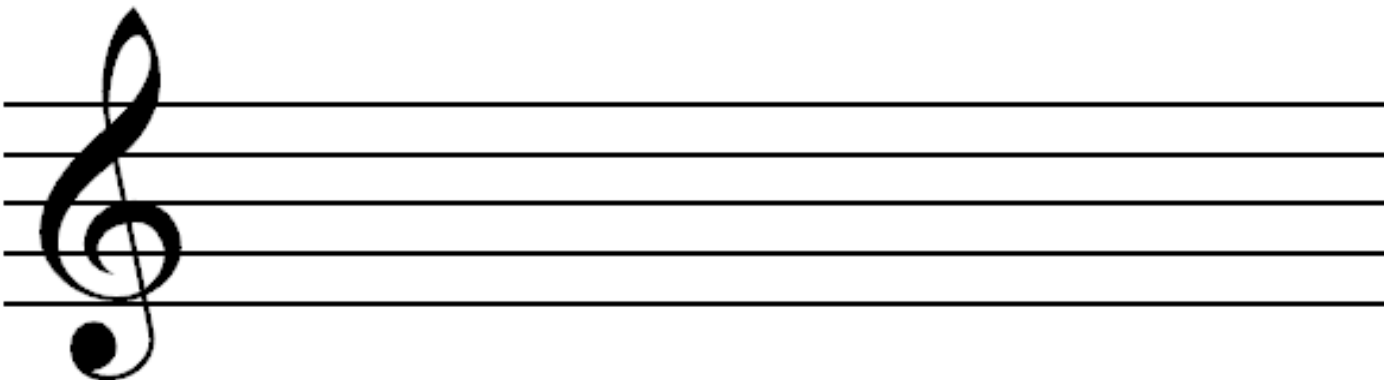
Week 1: Playing the Keyboard

Exercise 1

Draw in the note names on the keys of the keyboard



Copy and draw four treble clefs:



Exercise 2

Complete the following:

Notes on the spaces spell...

Notes on the lines spell...



Exercise 3



Write the correct note name underneath each of these notes:



Week 2: Note Values

Exercise 4

Complete the following table:

NOTE	NAME	VALUE
	QUAVER	
		1
	MINIM	
	DOTTED MINIM	
		4

Week 3: Merrily We Roll Along



Exercise 5

C G C

A musical staff in treble clef with a 4/4 time signature. The melody consists of quarter notes: C4, D4, E4, F4, G4, A4, B4, C5, D5, E5, F5, G5, A5, B5, C6.

C G C

A musical staff in treble clef with a 4/4 time signature. The melody consists of quarter notes: C4, D4, E4, F4, G4, A4, B4, C5, D5, E5, F5, G5, A5, B5, C6. The piece ends with a double bar line.

1. How many beats are in each bar? _____
2. Write the note names in underneath each note.
3. Circle one example of a MINIM.
4. How many BARS are in this piece? _____
5. How many different chords are used in this piece? _____
6. Which hand do you use to play the MELODY? _____
7. Which hand do you use to play the CHORDS? _____
8. Circle the DOUBLE BAR LINE which tells us the piece is finished.

Week 4: Revision of Note Names



Exercise 6

Name these notes to reveal some four letter words:

Three musical staves, each containing eight notes. Below each note is a dotted line for labeling.

Staff 1: G4, A4, B4, C5, D5, E5, F5, G5

Staff 2: G4, A4, B4, C5, D5, E5, F5, G5

Staff 3: G4, A4, B4, C5, D5, E5, F5, G5

Exercise 7

Draw in the missing notes on the correct line or space:

Three musical staves with missing notes to be drawn in.

Staff 1: Notes B, E, F are labeled below the staff.


Staff 2: Notes A, D, C are labeled below the staff.

Staff 3: Notes F, G, E are labeled below the staff.





Week 5: Quavers

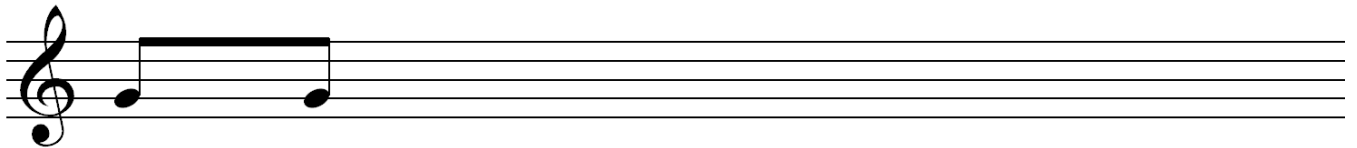
 = $\frac{1}{2}$ beat.

 = $\frac{1}{2} + \frac{1}{2}$

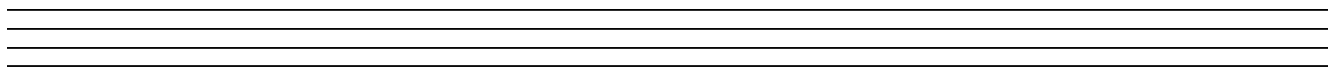
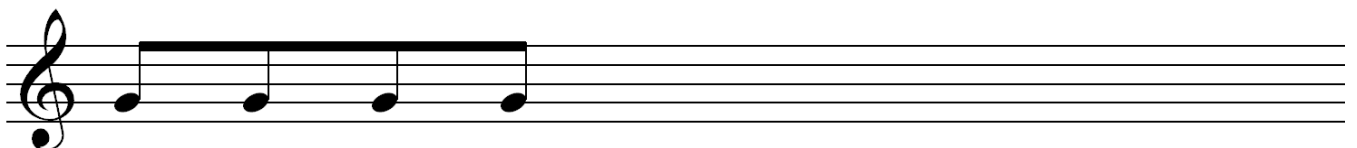
 = $\frac{1}{2} + \frac{1}{2} + \frac{1}{2} + \frac{1}{2}$

Exercise 8

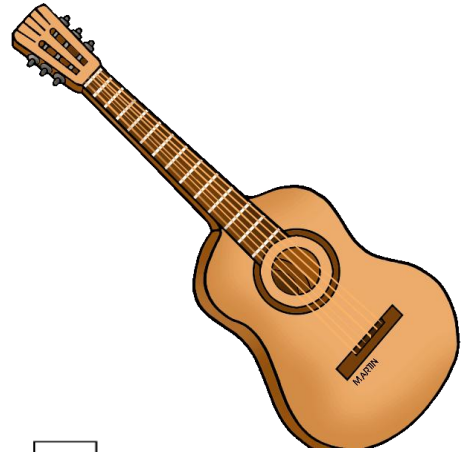
Copy and draw 3 examples of PAIRED QUAVERS:



Copy and draw 3 examples of GROUPED QUAVERS:



Week 6: Super Trooper



Exercise 9

Musical notation for Exercise 9, consisting of two staves in 4/4 time. The first staff starts with a treble clef and a 4/4 time signature. It contains 12 measures of music. Above the first measure is a box containing the letter 'C'. Above the 10th measure is a box containing the letter 'G'. The second staff also starts with a treble clef and contains 12 measures of music. Above the 6th measure is a box containing the letter 'F', above the 7th measure is a box containing the letter 'G', and above the 11th measure is a box containing the letter 'C'. The music consists of quarter notes, eighth notes, and a half note.

1. How many beats are in each bar?
2. Write the note names in underneath each note.
3. Circle one example of GROUP QUAVERS.
4. How many BARS are in this piece?
6. How long does a SEMI-BREVE last for? _____
7. Does the music move mainly in STEP or LEAP? _____
8. Circle two bars which are example of REPETITION.

Week 7: Lightly Row

Exercise 10



1. How many beats are in each bar?
2. Write the note names in underneath each note.
3. Circle one example of a SEMI-BREVE.
4. Which bars are the same as bars one and two? _____
5. How many chords are used in this piece?
6. Circle the bar which demonstrates repetition of only ONE NOTE.
7. Circle an example of ASCENDING STEP.

Homework Progress Report

Please ask your parent/ guardian to read and sign this page when you have completed this booklet. There is also a space for any comments they might have.

Homework Return		1	2	3	4	5	6	7	8	9
Effort		Excellent								
		Very Good								
		Satisfactory								
		Unsatisfactory								
Attainment		Excellent								
		Very Good								
		Satisfactory								
		Unsatisfactory								
Neatness		Excellent								
		Very Good								
		Satisfactory								
		Unsatisfactory								

Teacher's Signature: _____

Date: _____

Parent Signature: _____

Date: _____

Any Comments: