



You will need:

A wifi connection

Your individual or class network login details

Click on the [Safari](#) App

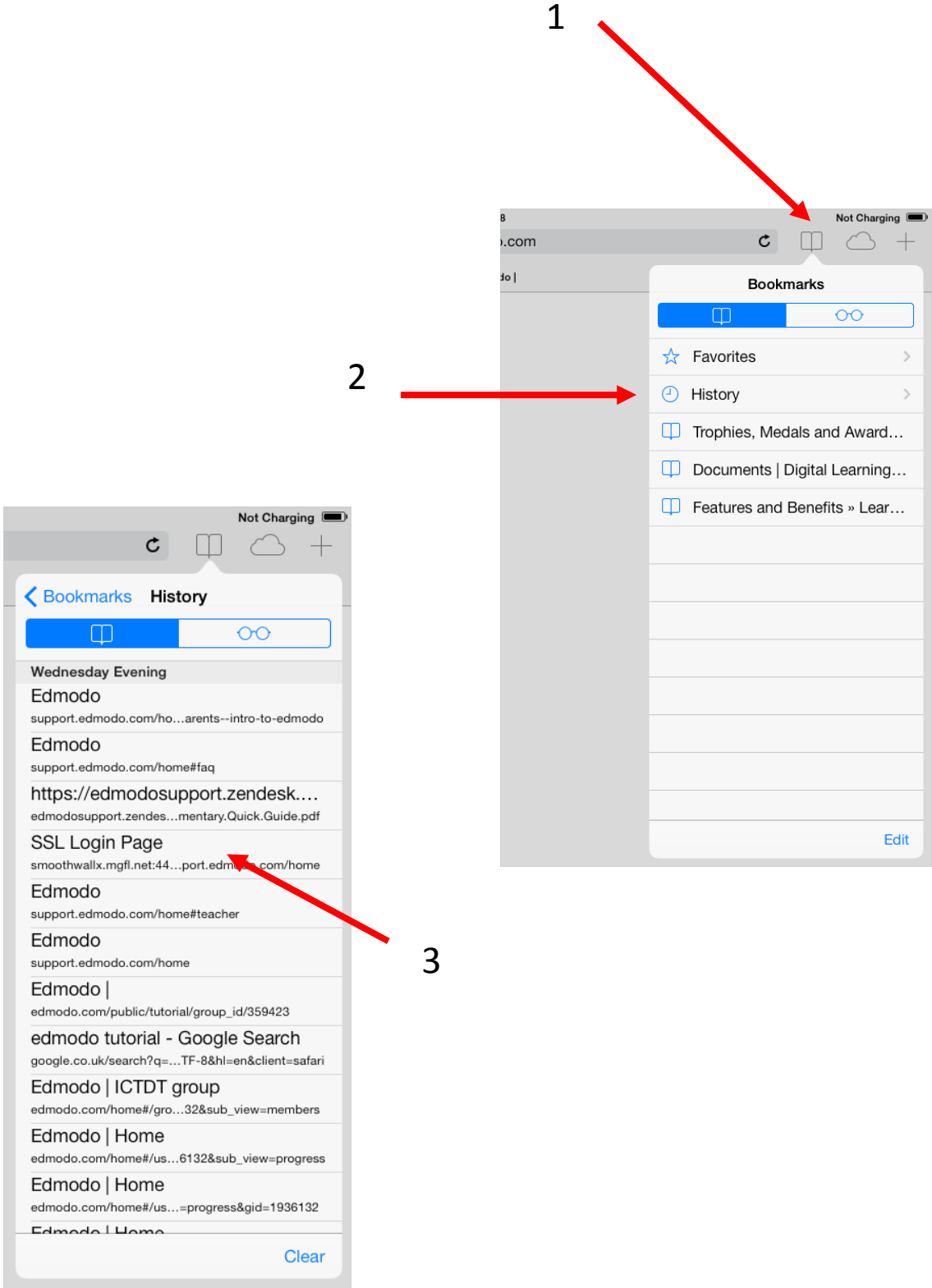


Insert your individual or class network login details.

A screenshot of the Smoothwall login page. The page has a light blue background with a white border. At the top, the word "smoothwall" is written in a large, blue, lowercase sans-serif font. Below the logo, there are two input fields: "Username:" followed by a white rectangular box, and "Password:" followed by a white rectangular box. To the right of the password field is a grey button with the word "Login" in white text. The page is framed by a blue border on the left and bottom.

# Logging into Smoothwall

If the Smoothwall login box doesn't appear go to Safari and access Smoothwall from the History option.



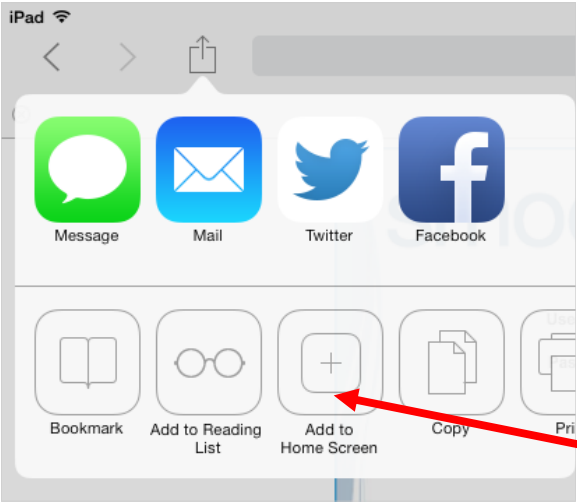
# Logging into Smoothwall

It's a good idea to set up a Smoothwall Shortcut on the homescreen.

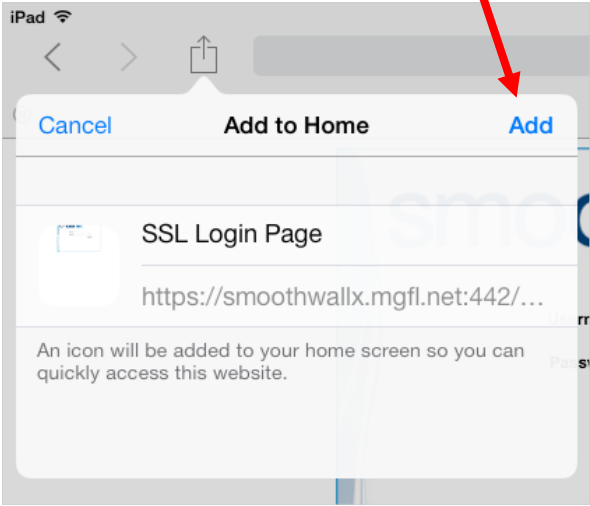
1



3



2



The shortcut will appear on the homescreen